

**PIENAAR ENERGY (PTY) LTD**

# **What is the safe elevation distance of photovoltaic panels**



## Overview

---

Height Restrictions: Local building codes specify that the height of solar panels must not exceed a certain range, especially for rooftop installations, generally not more than 30 to 50 centimeters above the roof height. Local Regulations: States may have their own rules. In photovoltaic system design, the spacing between solar panels is a key factor that directly affects system performance, including light reception, heat dissipation, and maintenance convenience. 5x panel height for optimal performance. Industry data shows 30% of. There is no single correct answer since the solar elevation starts at zero in the morning and ends at zero in the evening. The sunshine (irradiation) on an array has three components, direct beam, diffuse (blue sky and overcast), and reflected from the ground in front of the array. Here we will. Knowing the minimum angle of incidence of sunlight during the year, it is possible to determine the distance between successive rows of photovoltaic panels. The figure below shows the schematic diagram used to calculate the row spacing and the formula for the calculation: Solutions To Reduce The. The typical distance between the bottom edge or frame of a solar panel and the roof surface falls within a narrow and consistent range across the residential solar industry. For most sloped-roof installations, this clearance is generally between 4 and 6 inches (approximately 100mm to 150mm). This. The magic number for photovoltaic panel placement isn't just about maximizing sunlight - it's a safety tango between efficiency and precaution. Let's crack this nut with real-world examples and a dash of solar humo HOME / How Far Should Photovoltaic Panels Be Installed to Avoid Harm?

Your Safety.

## What is the safe elevation distance of photovoltaic panels

---



### What Is the Typical Distance Between Solar Panels and a Roof?

While 4 to 6 inches is the common recommendation, several factors can require an installer to deviate from this standard height. Local building codes, particularly those related to fire safety, often mandate ...

[Get Price](#)

---

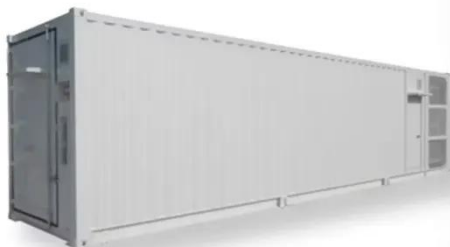
### What is the minimum distance between rows of solar panels

Minimum row spacing for solar panels, critical to prevent shading, is typically 2-3 meters in mid-latitudes (e.g., 40°N), calculated using winter solstice sun angle to maintain 90%+ energy ...



[Get Price](#)

---



### PV Row to Row Spacing

In most cases 90% of the unobstructed irradiation on the array occurs when the solar elevation is above 50% of the maximum winter elevation. The elevation correction is therefore 50%. This may be ...

[Get Price](#)

---

## How Close Can Solar Panels Be to Edge of Roof

Setbacks of at least 1 to 2 feet allow homeowners, contractors, and inspectors to move safely around the panels without risking damage to the system or roof. Proper spacing also facilitates ...

[Get Price](#)



1075KWHH ESS

## Solar panel inclination angle, location and orientation

To take maximum advantage of solar radiation, it is advisable to orient the solar panels towards the south if we are in the northern hemisphere and the north if we are in the southern ...

[Get Price](#)

LPR Series 19'  
Rack Mounted

## Shade Calculator

Knowing the minimum angle of incidence of sunlight during the year, it is possible to determine the distance between successive rows of photovoltaic panels. The figure below shows the schematic ...

[Get Price](#)



## How to Calculate the Minimum Distance Between PV Panels?

Understand the importance of minimum installation distance for solar panels, calculation methods, and relevant

## ESS



regulations to ensure efficient operation and compliance of solar energy ...

[Get Price](#)

## Height Standards for Rooftop Solar Panels: Key Factors and Best

Discover how proper height optimization impacts solar efficiency, safety, and regulatory compliance. Learn why 18-36 inches has become the industry's golden range for rooftop PV installations.



[Get Price](#)



## How Far Should Photovoltaic Panels Be Installed to Avoid Harm?

While fire codes often cite 3 feet (0.9m) as the minimum safe distance for solar panels from roof edges, the reality's more nuanced. Consider these factors: Voltage levels (Higher voltage = bigger buffer) ...

[Get Price](#)

## The Science of Solar Elevation [Zenith Angles, and ...

Discover the science behind solar elevation, how it affects energy efficiency, and learn to calculate it for optimal solar panel placement.

[Get Price](#)



---

## Contact Us

---

For catalog requests, pricing, or partnerships, please visit:  
<https://www.pienaarshof.co.za>

