

PIENAAR ENERGY (PTY) LTD

What is the normal load of a single photovoltaic panel



- ✓ 100KW/174KWh
- ✓ Parallel up-to 3sets
- ✓ IP Grade 54
- ✓ EMS AND BMS



Overview

What is the average photovoltaic solar panel weight I should expect?

Generally, standard residential photovoltaic panels weigh between 40 and 50 pounds (about 18 to 22 kilograms). This weight makes them manageable, but still requires careful lifting during installation. Why is knowing the. These calculations, known as solar load calculations or better known as just “ load calcs ” are fundamental to designing an efficient and effective solar system as well as better permit submittals. This blog post will delve into different types of load calculations and provide examples for each:. The 96 cell solar panel is characterized by an 8 feet by 12 feet grid configuration, covers an area of 17.5 square feet and weighs approximately 70 pounds. These panels are designed to handle the higher energy demands of large commercial or industrial properties. Step 5: Est mation of a single PV module outp energy and convert it into electricity to use in your. Now, the amount of electricity in terms of kWh any solar panel will produce depends on only these two factors: Solar Panel Size (Wattage). Most common solar panel sizes include 100-watt, 300-watt, and 400-watt solar panels, for example. 9 inches and a width range of 39 to 51.

What is the normal load of a single photovoltaic panel



Solar Panels Sizes and Weights (All Sizes)

Sixty-cell solar panels most commonly produce 270 to 300 watts of energy. Seventy-two-cell solar panels measure 80 inches long by 40 inches wide. Like 60-cell solar panels, the normal ...

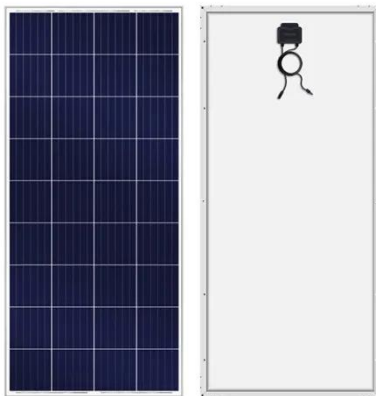
[Get Price](#)

Solar Power System Load Calculation Made Simple: Never Size ...

Whether you're powering a factory or a home, solar power system load calculation is the first and most critical step in design. In this guide, we break the process down and equip you with ...



[Get Price](#)



What is the appropriate load for a single photovoltaic panel

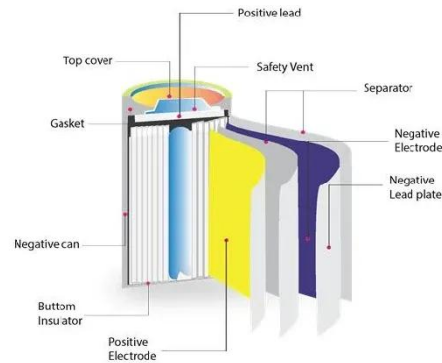
In this comprehensive guide, we will walk you through the process of calculating load wattage, power output, energy usage, backup time, and more to help you make the best choice for your solar panel ...

[Get Price](#)

How to calculate the load of solar panels , NenPower

In the realm of solar energy, the term "load" refers to the total amount of electrical power that a solar panel system is expected to supply. This typically encompasses all the devices and ...

[Get Price](#)



Determining Electrical Load for Stand-Alone PV System Sizing

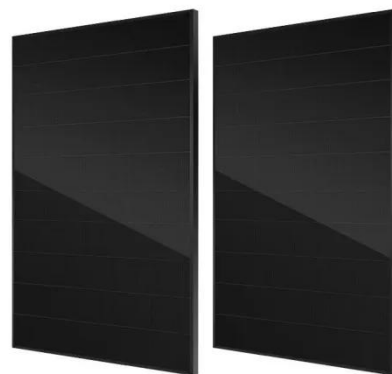
This article explores determining electrical loads for stand-alone PV systems, emphasizing load shifting strategies, calculating electrical load, and accounting for different types of loads such as ...

[Get Price](#)

Solar Panel Size And Weight: A Comprehensive Guide

When considering residential solar panels, typical configurations consist of 60 cells measuring approximately 3.25 feet by 5.5 feet. These panels cover an area of 17.62 square feet and weigh ...

[Get Price](#)



Solar Panel Size And Weight: A Comprehensive Guide

Panel Material
Panel Brand
Wattage/Voltage
Electricity Output



NeededEvery brand of solar panels has slight variations in their dimensions and weights, according to manufacturing material. Although the weight of different brands of solar panels varies, an average 60 cell solar panel weighs about 40 pounds. See more on forbes maxingroup [PDF]

What is the appropriate load for a single photovoltaic panel

In this comprehensive guide, we will walk you through the process of calculating load wattage, power output, energy usage, backup time, and more to help you make the best choice for your

...

[Get Price](#)

Solar Load Calcs: Definitions & Examples Provided

Dive into the world of solar load calculations, crucial for efficient solar system design. This blog post explores different types and provides practical examples for each.



[Get Price](#)

average photovoltaic solar panel weight guide

Generally, standard residential photovoltaic panels weigh between 40 and 50 pounds (about 18 to 22 kilograms). This weight makes them

manageable, but still requires careful lifting ...

[Get Price](#)



- ✓ 50KW/100KWH
- ✓ HIGHER POWER OUTPUT IN OFF-GRID MODE
- ✓ CONVENIENT OPERATION & MAINTENANCE
- ✓ PRE-WIRED

We Analyzed 100 Solar Panels: Dimensions, Efficiency, & Load

While various factors influence solar panel dimensions, our analysis gives you a helpful overview of typical sizes. It helps you understand how the length, width, and depth ranges relate to wattage, ...

[Get Price](#)



How Many kWh Does A Solar Panel Produce Per Day? Calculator

Most common solar panel sizes include 100-watt, 300-watt, and 400-watt solar panels, for example. The bigger the rated wattage of a solar panel, the more kWh per day it will produce.

[Get Price](#)



[Contact Us](#)

For catalog requests, pricing, or partnerships, please visit:
<https://www.pienaarshof.co.za>

