

**PIENAAR ENERGY (PTY) LTD**

# **What is the maximum voltage of photovoltaic inverter**



## What is the maximum voltage of photovoltaic inverter

---



### PV Array Voltage and Size: What You Need to Know

Once you have your max module voltage, all you need is the max voltage input for your inverter. Typically, you can find this on the inverter's datasheet. From here, divide your inverter's max input ...

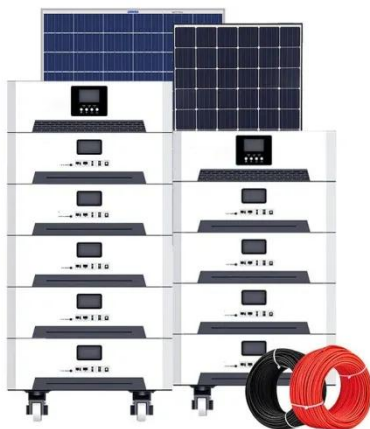
[Get Price](#)

### Solar Inverter Specifications

The following specifications reflect Tesla Solar Inverter with Site Controller (Tesla P/N 1538000-45-y). For specifications on Tesla Solar Inverter without Site Controller, see Tesla Solar Inverter and Solar ...



[Get Price](#)



### Key Inverter Parameter: Maximum PV Input Voltage

The maximum PV input voltage represents the highest DC voltage that a PV inverter can safely handle. This parameter defines the upper limit for the open-circuit voltage of PV modules ...

[Get Price](#)

## What Is the Maximum System Voltage in a Solar Panel?

Maximum system voltage is the maximum voltage at which your solar system array should be operated. This metric is crucial when you connect an inverter or controller to your array.

[Get Price](#)



## SIZING THE MAXIMUM DC VOLTAGE OF PV SYSTEMS

If this voltage gets exceeded, damage or even worse harm can result. New technologies established a new standard, to build PV systems with voltages up to 1000V (for special purposes in big PV power ...

[Get Price](#)

## What Is the Maximum System Voltage in a Solar Panel?

Short on time? Here's The Article SummarySolar Panels' Maximum System Voltage - What Does It Mean?How Is Maximum System Voltage calculated?ConclusionThe Ultimate Solar + Storage BlueprintMaximum system voltage is the maximum voltage at which your solar system array should be operated. This metric is crucial when you connect an inverter or controller to your array. So, why is this important, and how do we calculate it? We get it - solar system terminology can be confusing. Most residential solar installations are a



12 v solar system See more on  
shopsolarkits psu

## Interpreting inverter datasheet and main parameters , AE 868

Both the maximum voltage value and operating voltage range of an inverter are two main parameters that should be taken into account when stringing the inverter and PV array. PV designers should ...

[Get Price](#)



### Mppt voltage range vs max DC input voltage

My inverter max dc input is 600V and the max range goes up to 550V. I'm wanting to use 14 panels that have a 45.16 open circuit voltage using Nominal Operation Cell Temperature (49.37 ...

[Get Price](#)

### What Is the Maximum System Voltage in a Solar Panel? -- Solar ...

The maximum system voltage is the highest voltage that the components in your solar power system can safely withstand. This includes the solar panels, wiring, inverter, charge controller, ...



[Get Price](#)

## 8. Technical Specifications



1) Minimum start-up voltage is 41 VDC. Over-voltage disconnect: 65,5 V. 3) Peak power capacity and duration depends on start temperature of heatsink. Mentioned times are with cold unit. 5) The ...

[Get Price](#)

---

## Interpreting inverter datasheet and main parameters , AE 868

Both the maximum voltage value and operating voltage range of an inverter are two main parameters that should be taken into account when stringing the inverter and PV array. PV designers should ...



[Get Price](#)

---

## Understanding Maximum PV Input Voltage in PV Hybrid Inverters

What is Maximum PV Input Voltage? The maximum PV input voltage refers to the highest voltage level that the inverter can safely handle from the solar panels.

[Get Price](#)



---

## Contact Us

For catalog requests, pricing, or partnerships, please visit:

<https://www.pienaarshof.co.za>

