

## **PIENAAR ENERGY (PTY) LTD**

# **What is the angle for photovoltaic panels to be installed facing west**



## Overview

---

The optimal tilt angle for solar panels typically equals your location's latitude. For most of the continental United States, this means angles between 25-45 degrees. You can fine-tune this by subtracting 10-15 degrees for summer optimization or adding 10-15 degrees for winter. Orientation refers to the cardinal direction your solar panels face (north, south, east, or west), also known as the azimuth angle. For example, true north aligns with earth's true axis rather than aligning with the. The solar panel's best angle determines how much sunlight your panels capture throughout the year, directly impacting energy production and ROI. A correctly tilted system can improve efficiency by 5-10% annually, reducing payback time and boosting long-term savings. In general, solar panels should be installed so the sunlight hits them at as close to a perpendicular 90-degree angle for as long as possible during the day.

## What is the angle for photovoltaic panels to be installed facing west

---



### What is the optimal orientation and tilt angle for solar panels

In the case of "self-consumption" for the PV production, it can make sense to orient the panels east/west rather than south-facing. East-facing panels will produce more energy in the ...

[Get Price](#)

---

## Solar Panel Direction & Orientation: 2025 Complete Guide

East or west-facing panels generate 75-85% of optimal output, and north-facing panels produce only 45-60% depending on latitude. The difference between optimal and poor orientation ...



[Get Price](#)

---



### What Is the Best Angle for Solar Panels?

Photovoltaic (PV) panels must absorb as much sunlight as possible to operate at peak performance. The more direct sunlight hits the panels, the more efficiently they can convert solar ...

[Get Price](#)

---

## What's the Best Angle for Solar Panels? , EnergySage

South-facing solar panel systems almost always generate the most electricity, but east-west roofs can work well for solar, too. The direction is more important than the angle. Angle is rarely ...



[Get Price](#)



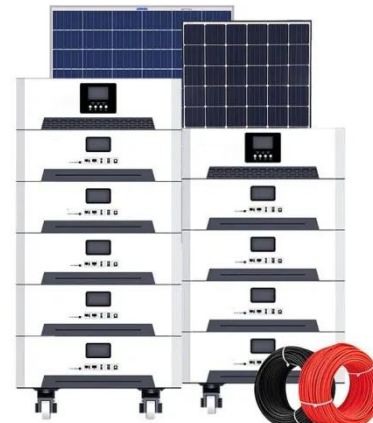
## What's the Best Angle for Solar Panels? , EnergySage

South-facing solar panel systems almost always generate the most ...

[Get Price](#)

## Best Angle for Solar Panel Installation: Complete Guide 2025

Southern Hemisphere: Panels should face true north. East or West Facing Panels: Still work, but they capture less energy overall. East-facing panels give more power in the morning, while west-facing ...



[Get Price](#)

## Optimal Solar Panel Angle: Maximizing Efficiency and Energy Output



So in most cases, the optimal orientation for solar panels is to face them directly south in the Northern Hemisphere or directly north in the Southern Hemisphere. This way solar panels ...

[Get Price](#)

---

## Best Angle And Orientation For Solar Panels - Forbes Home

In this guide, we'll break down the science behind the best solar panel angle, explain how to calculate it based on latitude, show seasonal ...

[Get Price](#)



---

## Solar Panel Best Angle , Tilt & Orientation Guide 2025

In this guide, we'll break down the science behind the best solar panel angle, explain how to calculate it based on latitude, show seasonal adjustments, and share competitor-winning insights ...

[Get Price](#)

---

## What's the Best Angle for Solar Panels to Get Maximum Output?

Across the continental U.S., the optimal tilt can range from 30-45 degrees.

However, the further north you live, the more orientation can affect solar panel efficiency. For example, ...

[Get Price](#)



## Best Angle And Orientation For Solar Panels - Forbes Home

For most homeowners, the ideal angle for a solar panel installation is close to or equal to the latitude of your home. This angle is typically between 30 degrees and 45 degrees.

[Get Price](#)

## The Best Angle for Solar Panel Installation

To achieve that goal, most solar panels face the equator and are installed at an angle between 30 to 45 degrees relative to the horizon. For homes in the northern hemisphere, solar ...

[Get Price](#)



## Contact Us

For catalog requests, pricing, or partnerships, please visit:  
<https://www.pienaarshof.co.za>

