

PIENAAR ENERGY (PTY) LTD

Uninterrupted power supply for communication base stations act

CE UN38.3 



Overview

This article will introduce how to select an appropriate backup power supply to ensure the reliability of the communication base station. Based on the proposed algorithm, a simulation model was created in the Proteus program and experimental tests were conducted. Without them, communication services would falter during power outages or fluctuations. For base stations located in deserts or other extreme environments, independent power supply is essential, as these areas are not only. This is an open-access article distributed under the Creative Commons Attribution License, which permits unrestricted use, distribution, and reproduction in any medium, provided the original work is properly cited ABSTRACT- In this research work, the classifications of the device that controls the. Fortelecom operators, a power outage never means 'service suspended. To make sure the system performs reliably in.

Uninterrupted power supply for communication base stations act



How about uninterrupted power supply for communication ...

Energy storage is no longer just a backup power source for communication base stations; it's a strategic asset enabling greater resilience, cost efficiency, and environmental responsibility.

[Get Price](#)

Communication Base Station Energy Solutions

Many remote areas lack access to traditional power grids, yet base stations require 24/7 uninterrupted power supply to maintain stable communication services.



[Get Price](#)



A Beginner's Guide to Understanding Telecom Power Supply Systems

Telecom power supply systems, particularly UPS systems, ensure that communication networks remain operational even during a power failure. A UPS, or uninterruptible power supply,

...

[Get Price](#)

UPS Systems for the Telecommunications Industry: Ensuring 24

Let's dive deeper into how UPS systems support the telecommunications industry and the essential role they play in ensuring uninterrupted power and connectivity.



[Get Price](#)



Algorithms for uninterrupted power supply to mobile ...

In order to study the uninterrupted power supply of mobile communication base stations, a simulation model was created using the Proteus program. This model integrated the main energy sources ...

[Get Price](#)

Mathematical Modelling of the Power Supply System of a Mobile

Using the Proteus software, a simulation model of an uninterrupted power supply system for mobile communication base stations was developed. Based on this model, experimental tests were conducted.

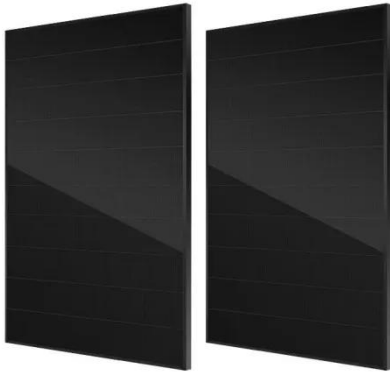
12.8V 200Ah



[Get Price](#)

A Device that Controls the

Power Supply Sources of a Mobile



One of the most important factors for the effective operation of mobile communication systems is the uninterrupted and stable supply of power to base stations. Uninterrupted power supply to base ...

[Get Price](#)

Uninterrupted Communication: Complete Backup Power Solutions for

Through the right configuration, strict maintenance, and intelligent control, EverExceed ensures every watt of power delivers continuous reliability, protecting communication networks when they are ...



[Get Price](#)



ANALYSIS OF METHODS OF PROVIDING UNINTERRUPTED POWER ...

In this work, an analysis of methods for providing mobile communication base stations with uninterrupted power supply was conducted. As a result of the analysis, the shortcomings and ...

[Get Price](#)

Communication Base Station Backup Power Selection Guide

Choosing the appropriate standby power supply is very important for the stable operation of the communication base station. This article will introduce how to select an appropriate backup ...

[Get Price](#)



Outdoor Cabinet BESS
50 kWh/500 kWh Battery Storage System
Industrial and Commercial Energy Storage

- All in One**
Integrating battery packs
- High-capacity**
50-500kWh
- Degree of Protection**
IP54
- Operating Temperature Range**
-20~60°C(Derating above 50 °C)
- Intelligent Integration**
integrated photovoltaic storage cabinet
- Rated AC Power**
50-100kW
- Altitude**
3000m(>3000m derating)

Contact Us

For catalog requests, pricing, or partnerships, please visit:
<https://www.pienaarshof.co.za>

