

PIENAAR ENERGY (PTY) LTD

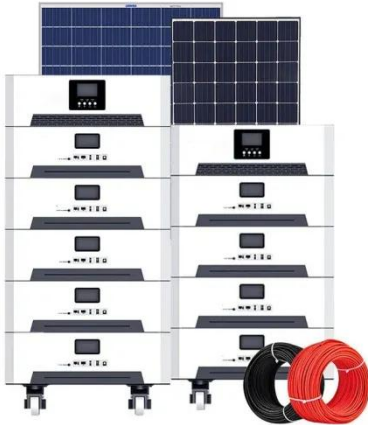
Total investment in myanmar energy storage power station



Overview

The electricity sector of Myanmar has now a total foreign investment of USD 21681. This report assesses underlying causes of the ongoing power sector crisis in Myanmar. It illustrates the implications on the near-future power supply using scenario-based analysis to understand the complexities related to the power sector performance, risks, and outlook. The report was prepared by. nd improved venue for 2025. The US remains at the center of the global energy storage industry, with California having surpassed 7GW of grid-scale energy storage installations, ERCOT going from strength to strength, and new markets ac ss all market segments. Carbon neutrality or achieving a net-zero carbon footprint entails balancing emissions with carbon removal or offsetting measures. USD 126m investment Union Resources & Engineering Co. (UREC) a branch of the Yunnan Energy Investment Group (YEIG) put an investment of USD 126. Currently, Myanmar's electricity is sourced from 62 hydropower plants, 20 natural gas power plants, and one coal-fired power plant, totaling 83 power plants. Despite this ambitious goal, only about half of the country's population is currently connected to the National Grid.

Total investment in myanmar energy storage power station



Energy Outlook and Energy Saving Potential in East Asia 2020

Myanmar is endowed with rich natural resources for producing commercial energy. Currently, the available energy sources in Myanmar are crude oil, natural gas, hydropower, biomass, and coal. Wind energy, solar, ...

[Get Price](#)

2025 myanmar energy storage

120+ expert speakers will cover the big ideas, market disruptors, new industry trends and innovative technologies in large scale solar, smart grid, rural electrification, rooftop solar, alternative renewables and ...



[Get Price](#)



Energy Outlook and Energy-Saving Potential in East Asia 2023

The Myanmar energy demand supply situation indicates that power generation mix must shift to more coal and hydropower, continued use of biomass, natural gas consumption, and appropriate increase of renewable ...

[Get Price](#)

World Bank Document

Myanmar's power sector, both on-grid and off-grid, requires not only significant investments but also policy reforms for financial viability to maintain, at least, its existing capability of electricity supply.

[Get Price](#)



DETAILS AND PACKAGING



- 1 USER MANUAL PDF
- 2 RJ45 Cable For RS485/CAN
- 3 Battery in Parallel Cables
- 4 RJ45 TO USB Monitor Cable
- 5 M8 Terminal*4

Naypyidaw Energy Storage Power Station Bidding: Key Insights for

As Myanmar accelerates its renewable energy transition, the Naypyidaw Energy Storage Power Station bidding process has become a focal point for global investors.

[Get Price](#)

Myanmar's Struggle and Potential in the Energy Sector

The civilian government had drafted a National Electrification Plan (NEP), which would require a total investment of \$5.4 billion to complete. For power distribution, about \$40 billion would be needed. ...

[Get Price](#)



The 106-megawatt Thakayta gas-fired power station in Yangon



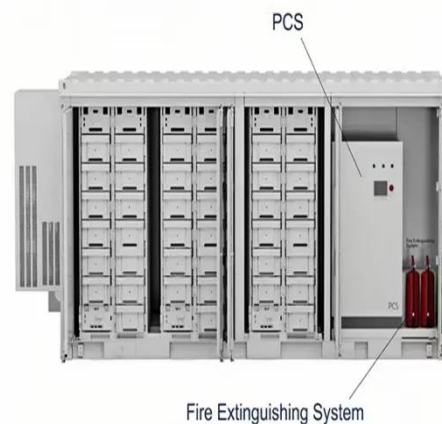
"With the strategic and financial support of its parent company, YEIG, the UREC will increase its investment in Myanmar's electricity sector to over US\$ 2 billion in the next five years," said Managing ...

[Get Price](#)

Unlocking Myanmar's Renewable Potential: Wind & Solar Energy ...

This article explores how cutting-edge storage technologies are enabling Myanmar to harness its abundant renewable resources while addressing energy security challenges.

[Get Price](#)



Myanmar Power Sector Review Jun 2023

This report assesses underlying causes of the ongoing power sector crisis in Myanmar. It illustrates the implications on the near-future power supply using scenario-based analysis to understand the complexities ...

[Get Price](#)

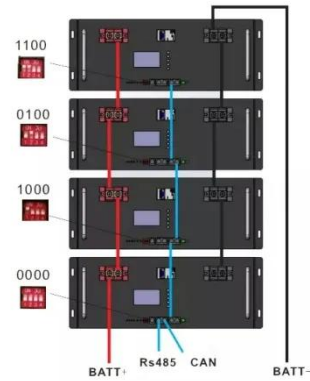


Analysis on Energy Cost of LCET-CN based on ERIA Energy

...

An analysis of energy costs was carried out on the BAU and LCET-CN scenarios to examine the total investment costs. The basic assumptions for this analysis are in Tables 11.1-11.3.

[Get Price](#)



Contact Us

For catalog requests, pricing, or partnerships, please visit:
<https://www.pienaarshof.co.za>

