

PIENAAR ENERGY (PTY) LTD

There is a piece of photovoltaic panel exposed on the bottom plate



Overview

The bottom of a PV cell is covered with a metal plate that allows electrons to move back into the cell with minimum resistance. Solar panels are not a single functional element, but modules composed of multiple structural units. Each component plays a distinct role in optical protection, electrical energy conversion, mechanical support, and electrical connection. During this process, solar panels collect electrons from the sun's light in the form of direct current (DC) electricity, which then pass through the inverter to convert into usable AC electricity (more. The front cover is the part of the solar panel that has the function of protecting the solar panel from weather conditions and atmospheric agents. The most crucial component of the solar panels is the photovoltaic (PV) cells.

There is a piece of photovoltaic panel exposed on the bottom plate



Solar panel components, the structure of PV panels

This part of the solar panel aims to protect against atmospheric agents, exerting an insurmountable barrier against humidity. Typically, acrylic, Tedlar, or EVA materials are used.

[Get Price](#)

Solar Panel Structure: What You Need to Know , Home

Solar Panel Junction Box: This is a small box typically mounted on the back of each individual solar panel. It houses the connections between the panel's output cables and the main ...



[Get Price](#)



Components of Solar Power Systems

The components of a solar panel are, from top to bottom; cover glass, EVA, cells, EVA, and backsheet. Additionally, there is an aluminium metal frame constituting approximately 36% of the weight of the ...

[Get Price](#)

Parts of a Solar Panel - Part I

The bottom of a PV cell is covered with a metal plate that allows electrons to move back into the cell with minimum resistance. The metal plate also acts to reflect light back through the cell.

[Get Price](#)



What is the bottom of the solar panel?

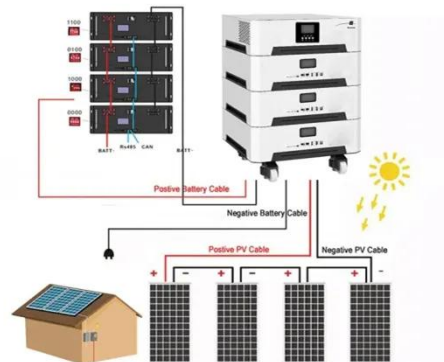
The backside of a solar panel, often referred to as the backsheet, constitutes a critical aspect of solar technology. The backsheet is primarily composed of polymeric materials, most ...

[Get Price](#)

Solar Panel Diagram and Its Components Explained

Explore the structure and components of a solar panel diagram, understanding its key elements and how each part contributes to harnessing solar energy.

[Get Price](#)



Solar panel components: A complete guide to every part

If you flip a solar panel over, the backsheet is the layer you'll see on the underside. Typically made from durable



polymer (plastic) materials, this layer protects the cells from moisture ...

[Get Price](#)

NOVA , Saved By the Sun , Inside a Solar Cell , PBS

(non-Flash) In this interactive feature, take a look inside a photovoltaic cell to learn how it transforms sunlight into electricity.

[Get Price](#)



Components of Solar Power Systems

Like PV optimizers, microinverters attach to the back of each panel to optimize the system's output and allow for individual panel-level monitoring. Unlike optimizers, microinverters do not need a ...

[Get Price](#)

There is a piece of photovoltaic panel exposed on the bottom plate

The components of a solar panel are,

from top to bottom; cover glass, EVA, cells, EVA, and backsheet. Additionally, there is an aluminium metal frame constituting approximately 36% of the weight of the ...

[Get Price](#)



What Are the Main Components of Solar Panels? A Structural ...

The front glass is positioned on the outermost side of the module and represents the first structural interface through which light enters the solar panel. At the same time, it provides ...

[Get Price](#)

Contact Us

For catalog requests, pricing, or partnerships, please visit:
<https://www.pienaarshof.co.za>

