

PIENAAR ENERGY (PTY) LTD

The wind power station was destroyed



Overview

The turbines, which were more than 200 feet tall, were blown up one after another. It took about 30 seconds for blasts to knock them down. 5-megawatt wind farm, Madison Wind Power, has reached the end of its useful life, owner EDP Global said. Seven wind turbines that were heralded 25 years ago as harbingers of New York state's green energy future were demolished Wednesday in Madison County. more Wind turbines crashed down in a spectacular demolition in. A wind turbine in Wisconsin collapsed, leaving a crater and debris strewn across a field. For decades, Americans have been told that wind power was the clean, responsible alternative to fossil fuels. Social media has captured terrifying images of the violent tornado ripping through the wind farm, uprooting trees, damaging buildings and.

The wind power station was destroyed



✓ IP65/IP55 OUTDOOR CABINET

✓ OUTDOOR CABINET WITH AIR CONDITIONER

✓ OUTDOOR ENERGY STORAGE CABINET

✓ 19 INCH

An 'unusual and rare' wind turbine failure is littering Nantucket

Debris from a broken offshore wind turbine has for days been washing up on Nantucket shorelines, prompting beach closures and frustrating locals at the peak of the summer season.

[Get Price](#)

US onshore wind farms suffer impacts by powerful twisters in Iowa

The American press has reported that the damage to wind turbines and wind farms was severe. MidAmerican Energy, which serves nearly two-thirds of Iowa, reported that six turbines collapsed ...



[Get Price](#)



Wind towers crumpled after Iowa wind farm suffers rare ...

A wind farm in southwest Iowa suffered a direct hit from a ...

[Get Price](#)

Powerful tornado topples wind turbines in US: Experts say such

A powerful tornado has swept through a wind farm in the United States, leaving a trail of crumpled power-producing towers in its wake. Five wind turbines were destroyed by the freak weather

[Get Price](#)



Deye inverters and Deye batteries are more compatible.



The Unfolding Disaster of Wind Energy

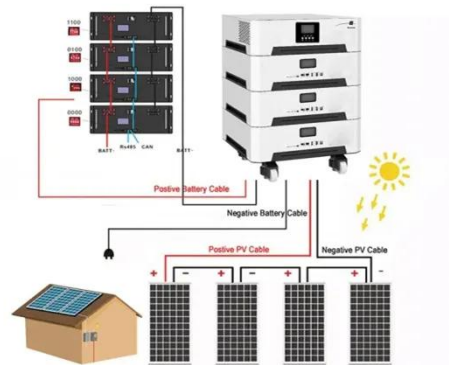
Cape Wind, once the poster child for offshore wind in America, died in 2017 when utilities bailed on their agreements, realizing they were throwing money into a black hole.

[Get Price](#)

Watch the moment two wind turbines were demolished ...

Two wind turbines were demolished in Story County around 4 p.m. Wednesday. See them topple in footage captured by local authorities.

[Get Price](#)



Aging renewable facilities trigger safety warnings after turbine collapse

On the 2nd, a wind turbine at the Changpo Wind Power Complex in



Yeongdeok-eup, Yeongdeok-gun, North Gyeongsang Province, collapsed toward a road. The structure, dozens of meters tall, fell and

[Get Price](#)

Wind Turbine Collapses are Supposedly Rare, but Several Have ...

On August 17, a wind turbine tower in the Point Tupper wind farm, Nova Scotia, Canada collapsed. The collapse of the tower is supposedly the first incident of its type in Canada although ...



[Get Price](#)



Wind towers crumpled after Iowa wind farm suffers rare direct hit from

A wind farm in southwest Iowa suffered a direct hit from a powerful tornado that crumpled five of the massive power-producing towers, including one that burst into flames.

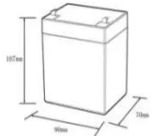

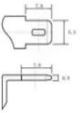
[Get Price](#)

Madison Wind Farm wind turbines destroyed in spectacular explosions

Seven wind turbines that were heralded 25 years ago as harbingers of New York state's green energy future were demolished Wednesday in Madison County. The turbines, which were ...

[Get Price](#)



12.BV6Ah

Nominal voltage (V):12.8
 Nominal capacity (Ah):6
 Rated energy (Wh):76.8
 Maximum charging voltage (V):14.6
 Maximum charging current (A):6
 Floating charge voltage (V):13.6~13.8
 Maximum continuous discharge current (A):10
 Maximum peak discharge current @10 seconds (A):20
 Maximum load power (W):100
 Discharge cut-off voltage (V):10.8
 Charging temperature (°C):0~+50
 Discharge temperature (°C):-20~+60
 Working humidity: <95% R.H (non condensing)
 Number of cycles (25 °C, 0.5C, 100%doD): >2000
 Cell combination mode: 32700-4s1p
 Terminal specification: T2 (6.3mm)
 Protection grade: IP65
 Overall dimension (mm):50*70*107mm
 Reference weight (kg):0.7
 Certification: un38.3/msds

Madison Wind Farm turbines demolished after 25 years of service

Wind turbines crashed down in a spectacular demolition in Madison County on Wednesday, Sept. 17, 2025, after 25 years of operation. They had reached the end of their expected lifespan.

[Get Price](#)

Contact Us

For catalog requests, pricing, or partnerships, please visit:
<https://www.pienaarshof.co.za>

