

PIENAAR ENERGY (PTY) LTD

The solar panel with the most power generation per square meter



The solar panel with the most power generation per square meter



Solar Energy Per Square Meter: How Much Power Can You Get?

This article explores solar energy per square meter and the various factors that influence energy output, such as location, climate, and panel efficiency. It provides crucial calculations, ...

[Get Price](#)

How much does solar energy generate per square meter?

Standard efficiencies for commercial solar panels range from 15% to 22%. This percentage reflects how much sunlight is converted into usable electricity. For instance, a panel with ...



[Get Price](#)



Solar Panel Output Per Square Meter

Discover how much electricity solar panels generate per square meter, explore efficiency factors, technology comparisons, and future innovations in photovoltaic energy.

[Get Price](#)

Solar Power per Square Meter Calculator

Power of Panel (Watt Peak): Solar panels are marked with watt peak (Wp), and this is the amount of output the panels should produce in ideal conditions. Your solar panel will give more ...

[Get Price](#)



Solar Energy Generation Per Square Metre: A Complete Guide

Thin-Film Solar Panels - 10-12% efficiency, producing 100-120W per square metre. To put this into perspective, if you install 10 square metres of monocrystalline solar panels, you could ...

[Get Price](#)

Solar Panel Watts Per Square Meter Explained

Compare solar panels to see which generates most electricity per square meter. A higher W/m value means a solar panel produces more power from a given area. This can help you determine how ...

[Get Price](#)



How Much Energy Does A Solar Panel Produce? , EnergySage



For now, the most efficient residential solar panels available top out around 23%, but ongoing innovation means efficiency continues to improve. Some panels' high power output rating is ...

[Get Price](#)

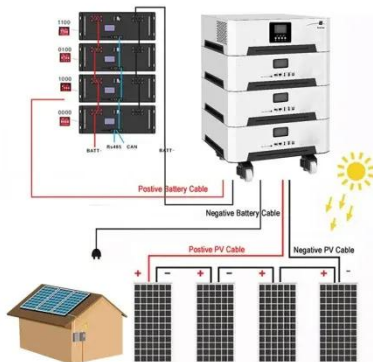
How Much Energy Does A Solar Panel Produce?

Most residential panels in 2025 are rated 250-550 watts, with 400-watt models becoming the new standard. A 400-watt panel can generate roughly 1.6-2.5 kWh of energy per day, depending ...



2MW / 5MWh
Customizable

[Get Price](#)



How Much Power Does 1 Square Meter of Photovoltaic Panels ...

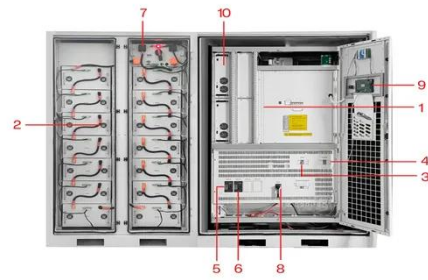
With advancing photovoltaic technologies, today's 1m² panel generates 40% more power than 2010 models - and the efficiency race continues. Download How Much Power Does 1 Square Meter of ...

[Get Price](#)

Solar Power Per Square Meter Calculator

Calculate solar panel energy output per square meter. Get accurate daily, monthly, and annual production estimates based on location, panel specs, and system losses.

[Get Price](#)



- | | |
|-----------------------------|-----------------------------|
| 1 PCS Module | 6 OPV2 side circuit breaker |
| 2 Battery room | 7 High Volt Box |
| 3 Grid side circuit breaker | 8 BAT side circuit breaker |
| 4 Load side circuit breaker | 9 LCD display screen |
| 5 OPV1 side circuit breaker | 10 MPPT |

Contact Us

For catalog requests, pricing, or partnerships, please visit:
<https://www.pienaarshof.co.za>

