

**PIENAAR ENERGY (PTY) LTD**

# **The solar inverter string current is 0**



## Overview

---

Turn the inverter P/1/0 switch 0 (OFF) to stop production and wait at least five minutes for VDC to drop below 30V. In a well-ventilated space, check the voltage on the string with the problematic Power Optimizer using a. Turn off the inverter by moving the P/1/0 switch to 0 (OFF) and wait for the VDC on the inverter to drop below 30V. After the VDC drops below 50V, the message no longer displays. If the DC does not reach a safe level. This article explains the possible causes when an inverter is producing / generating low or NO current in one or more of its DC inputs, despite measuring expected DC voltage with meter. Lower Voltage than Expected (Likely Wiring Error) Figure 2. While string inverters are generally reliable and efficient, like any electrical equipment, they can. The 3 panel string does not appear to work. I have tested the panels, they are 34-35V each and individually show an expected short circuit current for sun (3-11A). Regular maintenance and troubleshooting are essential to ensure the inverter operates efficiently.

## The solar inverter string current is 0

---



### The Complete Guide to String Solar Inverters for Maximum Efficiency

Solar panels naturally produce direct current (DC) electricity, but your home and the electrical grid use alternating current (AC). The job of the solar inverter --specifically a string ...

[Get Price](#)

---

### Low or no current from DC string

This article explains the possible causes when an inverter is producing / generating low or NO current in one or more of its DC inputs, despite measuring expected DC voltage with meter.



[Get Price](#)

---



European Warehouse



7-15 days delivery

ONE-STOP SOLUTION

65kWh 30kW

130kWh 30kW

130kWh 60kW

### Common Issues with Solar String Inverters and How to Fix Them

Understanding the common issues with solar string inverters and how to troubleshoot or fix them can help ensure your solar system continues to operate efficiently. Here are some of the most common ...

[Get Price](#)

---

## Power Optimizer and String Troubleshooting Guide - North America

When strings are not operating correctly, it may indicate an issue with the connection of the inverter to the end of the string. For any production issues, check the connection between the inverter and the ...

[Get Price](#)



## Troubleshooting and Maintenance Tip for String Inverter in Solar

String inverter is a critical component in solar systems, converting the direct current (DC) generated by solar panel strings into alternating current (AC) suitable for use in homes and ...

[Get Price](#)

## Common Issues with Solar String Inverters and How to ...

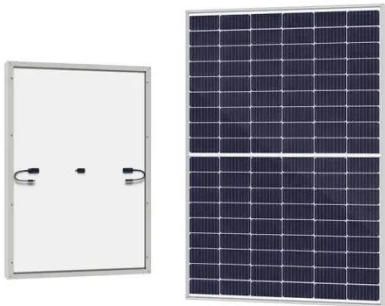
Understanding the common issues with solar string inverters and ...

[Get Price](#)



## Common Solar String Inverter Problems and How to

## Troubleshoot ...



One of the most common problems with a solar string inverter is reduced output due to shading. When part of a solar panel string is shaded, it can lower the performance of the entire system.

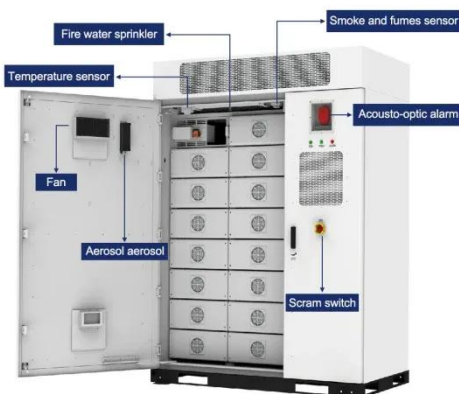
[Get Price](#)

## The 5 Most Common Issues With Solar String Inverters

Here Are the 5 Most Frequent String Inverter Failures. Thinking about your solar system, the panels often get the most attention. But the inverter is the real unsung hero - and often the component most ...



[Get Price](#)



## One string not reaching the inverter limits it

What could be happening is that a panel on one string is leaking positive voltage to the frame. And a panel from another string is leaking negative voltage to the frame. And intermittent ...

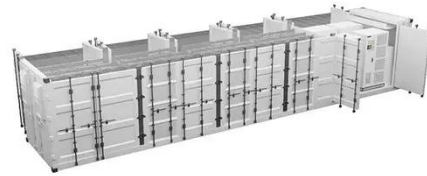
[Get Price](#)

## H1-3.7-E inverter second string: zero current issue

The cable between the panels and the inverter has been tested and has an

expected resistance (0.4 Ohms). Both pv1 and pv2 inputs on the inverter appear to work - as if I swap the ...

[Get Price](#)



## MCI and PV String Issues

Overview of Common MCI and PV String Troubleshooting Tests. Figure 1. Lower Voltage than Expected (Likely Wiring Error) Figure 2. Higher Voltage than Expected (Likely Open Circuit)

[Get Price](#)

## Contact Us

For catalog requests, pricing, or partnerships, please visit:  
<https://www.pienaarshof.co.za>

