

PIENAAR ENERGY (PTY) LTD

**The area required for a single
megawatt energy storage
power station**



Overview

We typically need a minimum of 1/4 acre (approximately 20MW/40MWh). The land should be flat and have road access. Battery energy storage systems (BESS) look compact compared to solar farms — fewer acres, fewer panels. But that illusion hides several land and site-control challenges: Density variation: depending on battery chemistry, layout, and modular design, land use per MW or MWh can vary significantly. Yet our understanding of the land requirements of utility-scale PV plants is outdated and depends in large part on a study published nearly a decade ago, while the utility-scale sector was still young. A 2022 failed project in Germany teaches us: 300MW system required 12 acres but local laws capped industrial zones at 10 acres. Moral?

Always check: How much land for 100MW storage?

. How much land does 1 MW of battery energy storage occupy?

1. The land required for 1 MW of battery energy storage varies widely based on technology and implementation strategies, but can be summarized in these points: 1) The typical spatial footprint ranges from 0.

The area required for a single megawatt energy storage power stat



Battery energy storage system

Since battery storage plants require no deliveries of fuel, are compact compared to generating stations and have no chimneys or large cooling systems, they can be rapidly installed and placed if ...

[Get Price](#)

How much land does 1 MW of battery energy storage occupy?

The land required for 1 MW of battery energy storage varies widely based on technology and implementation strategies, but can be summarized in these points: 1) The typical spatial footprint ...



[Get Price](#)



Battery Storage Land Requirements: What Developers (and ...

Battery storage may require a fraction of the land of solar or wind, but that doesn't mean it's simple. Site control, zoning, and safety standards introduce a different layer of complexity.

[Get Price](#)

How many acres does the shared energy storage power station ...

Battery energy storage systems (BESS) utilize chemical processes to store energy, generally occupying less land than other methods. A typical large-scale BESS can occupy ...



[Get Price](#)



 LFP 12V 100Ah

Grid-Scale Battery Storage: Frequently Asked Questions

Is grid-scale battery storage needed for renewable energy integration? Battery storage is one of several technology options that can enhance power system flexibility and enable high levels of renewable ...

[Get Price](#)

Battery Storage

We typically need a minimum of 1/4 acre (approximately 20MW/40MWh). The land ideally needs to be no closer than 200 meters of housing (for the minimal noise from cooling system). The land should ...

[Get Price](#)



Energy Storage Power Station Project Land Area: What You Need to ...



As battery densities improve by 8-12% annually, today's energy storage project land needs might shrink faster than polar ice caps. But for now, smart planning remains crucial.

[Get Price](#)

Land Requirements for Utility-Scale PV:

While there are potentially other ways (such as "agrivoltaics") to mitigate the negative land-use impacts of utility-scale PV, the primary way to mitigate the inevitability of rising land costs is to minimize the ...



[Get Price](#)



Energy Storage Power Station Land Scale: Key Considerations for

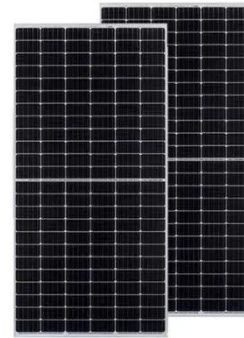
Summary: Explore how land requirements impact energy storage projects, discover optimization strategies, and learn why proper scaling matters for renewable energy integration.

[Get Price](#)

Battery energy storage system

Overview
Construction
Safety
Operating characteristics
Market development and deployment

A battery energy storage system (BESS), battery storage power station, battery energy grid storage (BEGS) or battery grid storage is a type of energy storage technology that uses a group of batteries in the grid to store electrical energy. Battery storage is the fastest responding dispatchable source of power on electric grids, and it is used to stabilise those grids, as battery storage can transition from standby to full power in u...



[Get Price](#)



Land Requirements for Utility-Scale PV: An Empirical Update on ...

This article provides a much-needed update to estimates of utility-scale PVs land requirements, expressed via the metrics of power and energy density. We find that both power and energy density ...

[Get Price](#)

Contact Us

For catalog requests, pricing, or partnerships, please visit:
<https://www.pienaarshof.co.za>

