

PIENAAR ENERGY (PTY) LTD

**The EMS conditions for building
a wireless communication base
station are**



Overview

NFPA requires the system must be capable of all radio system frequencies assigned by AHJ. 3 requires In-building emergency responder communication enhancement systems installed within buildings shall be listed and labeled in accordance with UL 2524. Generally uses a low output of between 50 and 75 watts of transmission power B. Should be located in a low lying area, free from potentially damaging high winds XI. CH 7 Portable Fire Extinguishers An EMS base station is. Generally uses a low output of between 50 and 75. (1) Base stations with an emission bandwidth of 1 MHz or less are limited to 1640 watts equivalent isotropically radiated power (EIRP) with an antenna height up to 300 meters HAAT, except as described in paragraph (b) below. In unusual cases, typically with base station antennas located on rooftops, personnel might be exposed to RF fields above recommended limits depending on operating power. What are NFPA requirements for emergency responder communication enhancement systems?

es minimum inbound and outbound signal strength of -95 dBm. First responder communications.

The EMS conditions for building a wireless communication base station



Public Safety Primer

First responders need a reliable, resilient, optimized wireless broadband network to carry out their mission. Not only must they be able to communicate instantly without interruption, but agencies must ...

[Get Price](#)

Base stations and networks

The intensity of the radio waves is drastically reduced as the distance increases from the base station antenna. On the ground, in houses, and other places where people reside, the exposure levels from ...



[Get Price](#)



Government construction of communication base station EMS

As with any public or private facility, fire and emergency services stations are subject to theft, vandalism and violence. For staffed stations, these acts are most likely to occur when emergency response ...

[Get Price](#)

Communication base station EMS fire protection modification ...

This standard provides requirements for fire protection of telecommunications facilities providing telephone, data, internet transmission, wireless, and video services to the public as well as life safety ...



[Get Price](#)



Chapter 2: Preparatory Part 2 - Emergency Medical Responder

This section explores the key elements of communication in EMS, focusing on the technologies used, best practices for effective communication, and the importance of maintaining robust communication ...

[Get Price](#)

COMAR Base Stations 2000

The Institute of Electrical and Electronics Engineers (IEEE) Committee on Man and Radiation (COMAR) acknowledges public concerns about the safety of exposure to radio frequency (RF) fields from base ...

[Get Price](#)



eCFR :: 47 CFR 24.232 -

(1) Base stations with an emission bandwidth of 1 MHz or less are limited to



1640 watts equivalent isotropically radiated power (EIRP) with an antenna height up to 300 meters HAAT, except as

...

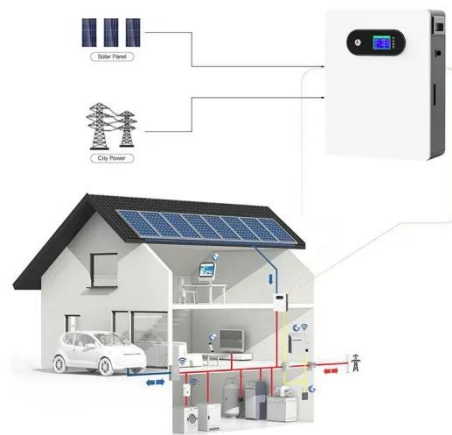
[Get Price](#)

Guide for the Selection of Communication Equipment for

...

The RF communication equipment considered in this guide includes portable radios, mobile radios, base/fixed station radios, repeaters, and base station/repeaters.

[Get Price](#)



Ch. 5 Notes.pdf

View Ch. 5 Notes.pdf from EMT A150 at Orange Coast College. Chapter 5 - Communication EMS Communications System Components of an Emergency Communication ...

[Get Price](#)

Chpt. 4 Flashcards , Quizlet

The role of dispatch in an EMS communications system is to obtain info about the nature of the emergency,

direct the appropriate emergency services to the scene and

[Get Price](#)



Contact Us

For catalog requests, pricing, or partnerships, please visit:
<https://www.pienaarshof.co.za>

