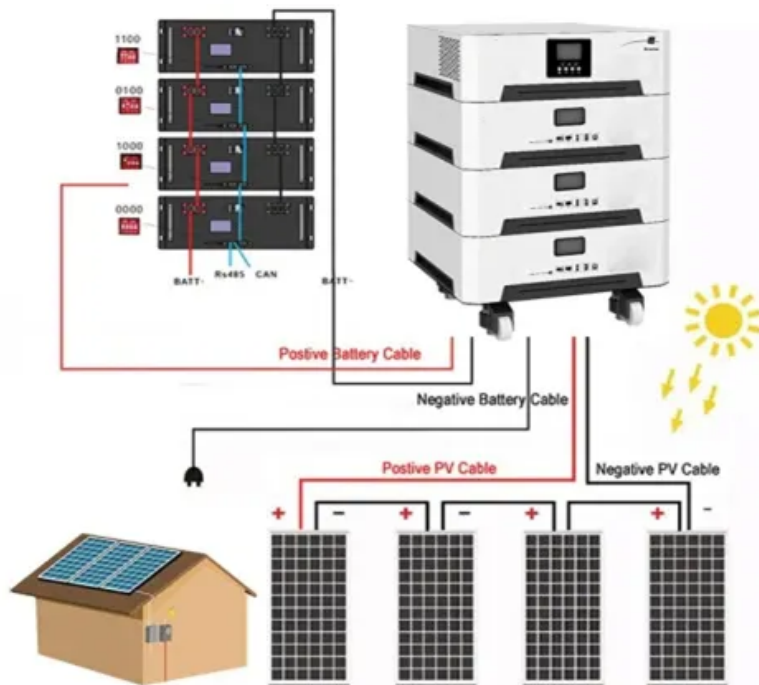


PIENAAR ENERGY (PTY) LTD

Sukhumi demand response



Overview

As global demand for renewable energy surges, solar panel reliability becomes critical. Let's explore Sukhumi solar photovoltaic panels' performance metrics, industry applications, and why they're gaining traction among international buyers. Abkhazia's Sukhumi (Sukhum) Airport will sharply reduce the number of flights over winter, leaving just one bi-weekly flight to Moscow until a yet undisclosed date. After that, flights on a 50-seat. Two pieces of news recently appeared in the media that sparked active discussion in Abkhazian society, particularly on social media, concerning the future development of transport and tourism in the republic. After the opening of Sukhumi Airport, planes therefrom will fly to seven Russian cities,". Vladislav Ardzinba Sukhum International Airport (IATA: SUI, ICAO: URAS), [4][5] formerly known as Sukhumi Babushara and Sukhumi Dranda (IATA: SUI, ICAO: UGSS) [6] is the main airport of Abkhazia. This typically occurs on days of extreme hot or cold temperatures when heating and cooling systems are causing greater demand on the grid.

Sukhumi demand response



Are Sukhumi Solar Photovoltaic Panels Reliable? A Data-Driven ...

As global demand for renewable energy surges, solar panel reliability becomes critical. Let's explore Sukhumi solar photovoltaic panels' performance metrics, industry applications, and why they're ...

[Get Price](#)

Demand Response

Direct Load Control demand response events involve the remote interruption of customers' energy usage, in which power distributors cycle loads like heating, cooling, elevators, washing etc. ON and ...



[Get Price](#)



Sukhumi Airport

The Ministry of Education and the Ministry of Energy and Transport of Abkhazia have already announced the recruitment of staff for the new international airport in Sukhumi, named after Vladislav ...

[Get Price](#)

Sukhumi Airport cuts winter flights, apparently due to lack of demand

Abkhazia's Sukhumi (Sukhum) Airport will sharply reduce the number of flights over winter, leaving just one bi-weekly flight to Moscow until a yet undisclosed date. The airport ended its summer schedule ...



[Get Price](#)



Sukhum International Airport

The airport was built in the mid-1960s, when the region was part of the Soviet Union. In the Soviet era, it was used only for domestic flights, primarily to transport people from across the Soviet Union to the beaches of Abkhazia. The airport was heavily damaged during the civil war in the early 1990s. Land mines and other explosive remnants of war have been cleared from the airport since by the HALO Trust, the only land mine clearance agency active in Abkhazia at the present time.

[Get Price](#)

Demand Response 101 , What is Demand Response?

Demand response (demand management) programs are offered by many utilities for energy consumers to enroll in and receive money back for reducing their energy demand, at the utility's request, during ...



[Get Price](#)



Sukhum International Airport

On 1 May 2025, Sukhum airport resumed operations and direct flights with Moscow for the first time since the 1990s and the war in Abkhazia. [7] The airport was built in the mid-1960s, when the region ...

[Get Price](#)

Farewell, Sukhumi

Georgian protesters unwittingly imperil their nation's survival. "Sokhumi!" Sokhumi!" The shouts ring out from the assembled crowds of Georgian youth in Rustaveli Plaza, in front of the ...

[Get Price](#)



Sukhumi Capital

Sukhumi Capital Sukhumi Capital

[Get Price](#)



Sukhumi demand response

According to Dzhindzholiya, administrative cases had been filed, after which the Sukhumi City Court decided to close the cases and release

the detainees. At 17:00 on 12 November,
all five detainees ...

[Get Price](#)



Contact Us

For catalog requests, pricing, or partnerships, please visit:
<https://www.pienaarshof.co.za>

