

PIENAAR ENERGY (PTY) LTD

Solar container lithium battery pack t-pole voltage is too low



Overview

These signs follow low voltage cutoff after a deep drain, an overcurrent event, cold or hot cell temperatures, or a fault that the BMS reports during its own checks. Power down loads and isolate the battery. The sections below address common LiFePO4 battery problems and show how to restore stable operation with simple checks and settings for your lithium battery system. Charging stalls for predictable reasons. Check temperature. Now today when I checked the battery I noticed that the voltage is at 12.0 V, which is about 9% SOC according to charts on the internet. Should I get a Low voltage disconnect that will stop or turn off my inverter?

And lastly what's this 20%-90% that I. Lithium batteries are reliable and long-lasting, but if your battery suddenly stops powering your gear or won't charge, it may have gone into Low Voltage Disconnect (LVD). Discover the root causes of low output voltage in lithium battery packs and actionable solutions to restore.

Solar container lithium battery pack t-pole voltage is too low



9 Fast Fixes for LiFePO4 Battery Issues Off the Grid

Fix your off-grid LiFePO4 battery now with these 9 easy troubleshooting steps. Resolve charging failures, voltage drops, and BMS errors to restore your power.

[Get Price](#)

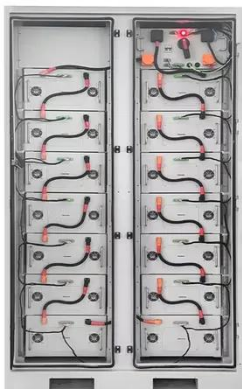
Why Your Lithium Battery Goes Into Low Voltage Disconnect -- And ...

How to Fix a Lithium Battery in Low Voltage Disconnect. When the battery is in LVD, solar panels often can't wake it up, especially if the charge controller needs battery power to activate. ...



[Get Price](#)

To Strive forward No Energy Waste



- ✓ All in one
- ✓ 100~215kWh High-capacity
- ✓ Intelligent Integration

Why Your Lithium Battery Pack Voltage Drops and How to Fix It

Discover the root causes of low output voltage in lithium battery packs and actionable solutions to restore performance. Learn how industry professionals diagnose and resolve voltage issues.

[Get Price](#)

Why Your Lithium Battery Pack Voltage Is Too Low: Causes & Solutions

Addressing lithium battery pack voltage issues requires technical expertise and proactive maintenance. By understanding root causes and implementing advanced solutions, businesses can significantly ...

[Get Price](#)



Help me understand my new LifePO4 battery parameters. : r/SolarDIY

I can see a bunch of guides on how to build your own solar setup, to wire size calculations, voltage drops, panel/battery sizing, etc, but I'm having a hard time on setting the proper ...

[Get Price](#)

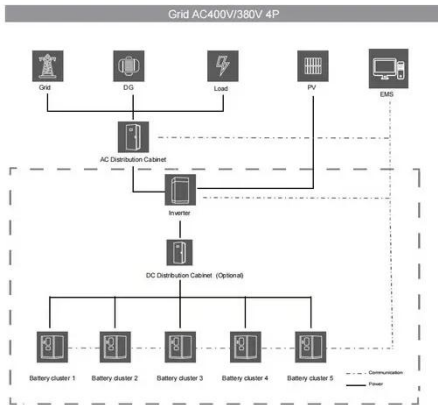
4 Simple Solutions to Solve Battery Pack Low Voltage ...

Learn how to fix battery pack low voltage issues. Discover common causes, troubleshooting tips, and safety advice to extend your battery life.

[Get Price](#)



LiFePO4 Troubleshooting: 5 Fixes for Lithium Battery



Systems

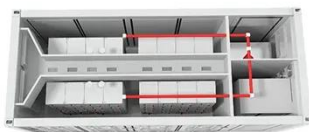
The sections below address common LiFePO4 battery problems and show how to restore stable operation with simple checks and settings for your lithium battery system.

[Get Price](#)

Battery voltage is too low and I have no way to charge

I decided to assemble the battery and with that my whole system, knowing that the battery would be running without a BMS, and I would have to be careful. Now today when I checked ...

[Get Price](#)



Zero or Low Voltage in LiFePO4 Batteries: Common Causes and

In this guide, we explore the most frequent reasons behind low or zero voltage in LiFePO4 cells and battery packs, along with practical troubleshooting steps suitable for both technicians and ...

[Get Price](#)

Optimized Guide: How to Diagnose and Troubleshoot 12.8V LiFePO4 Solar

Learn to diagnose & fix 12.8V LiFePO4 solar battery issues: voltage, capacity, charging, & more. Keep your solar system running smoothly with our expert troubleshooting guide!

[Get Price](#)



Contact Us

For catalog requests, pricing, or partnerships, please visit:
<https://www.pienaarshof.co.za>

