

**PIENAAR ENERGY (PTY) LTD**

# **Rooftop photovoltaic panel load detection**



## Overview

---

This guide details the critical steps for a structural load analysis of PV racking, from wind load calculations to assessing your roof's capacity for a secure solar installation. These forces are categorized into three main types: dead loads, live loads, and environmental loads. A complete assessment accounts for all three to ensure PV system structural integrity. Installing rooftop solar panels requires a dual-layered analysis— While the structural load assessment ensures the building can physically support the solar array and withstand environmental forces. This project implements an automated system for detecting solar panels on rooftops using deep learning techniques. Solar. Remote sensing technology has emerged as an indispensable approach for identifying distributed PV systems, primarily due to its advantages in wide coverage, cost-effectiveness, and periodic monitoring capabilities. There is enough solar energy hitting the Earth every hour to meet all of humanity's power needs for an entire year. In other words, the sun can more than.

## Rooftop photovoltaic panel load detection

---



### Rooftop photovoltaic panel load detection

The roof deck/roof supports should be inspected and analyzed to ensure they can handle the additional load of the PV system plus expected snow/ice load, hail size and wind speeds.

[Get Price](#)

---

### AI Rooftop Detection for Automated Solar Assessment

This project demonstrated how machine learning can automate rooftop assessment by detecting roof structures, estimating usable area, identifying obstacles and inferring material and ...

[Get Price](#)

---



### Automated Rooftop Solar PV Detection and Power Estimation ...

We are using this dataset to train an algorithm that identifies solar PV in high resolution satellite orthoimagery. Once our algorithm is robust, we can apply it to various imagery datasets to create a ...

...

[Get Price](#)

---



## Structural and Electrical Load Assessment for Rooftop Solar Installations

Structural and electrical load assessment guide for safe, efficient rooftop solar PV installations.

[Get Price](#)



## How to run a structural load analysis for rooftop PV racking

This guide details the critical steps for a structural load analysis of PV racking, from wind load calculations to assessing your roof's capacity for a secure solar installation.

[Get Price](#)

## SolarDiagnostics: Automatic damage detection on rooftop solar

We highlight numerous challenges to detect damages on solar PV arrays automatically using only their rooftop images.

[Get Price](#)



## Full article: Automated Rooftop Solar Panel Detection Through

Framework for PV panel detection in

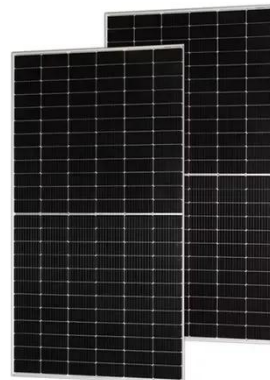


aerial imagery using a U-Net and considering the following factors: land use types, NIR, roof and panel color, and spatial resolutions.

[Get Price](#)

## Automatic Rooftop Solar Panel Recognition from UAV LiDAR Data ...

This study investigates the use of LiDAR point cloud data and Machine Learning (ML) to classify rooftop solar panels from building surfaces. While rooftop solar detection has been explored ...



[Get Price](#)



## Deep learning-based detection of rooftop photovoltaic panels using ...

The model effectively addresses the challenge of PV panel detection being susceptible to complex background interference, enhancing the accuracy of identifying small-target PV panels in ...

[Get Price](#)

## RoofTop Solar Panel Detection using Deep Learning

This project implements an automated system for detecting solar panels on rooftops using deep learning techniques. The system utilizes Convolutional Neural Networks (CNNs) to analyze aerial and satellite ...

[Get Price](#)



---

## Contact Us

For catalog requests, pricing, or partnerships, please visit:  
<https://www.pienaarshof.co.za>

