

PIENAAR ENERGY (PTY) LTD

Rooftop communication base station wind power RRU



Rooftop communication base station wind power RRU



The Role of Remote Radio Units in 5G and Telecom ...

Explore the role of remote radio units in 5G and telecom infrastructure. Learn about market growth, key players, and emerging trends.

[Get Price](#)

Antennas and Radio Units R& D in Open Networks

Modern base station antennas are therefore complex devices, typically housing as many as 16 independent antenna arrays. Each dual-polar pair of antenna arrays is connected to an RRU that ...



[Get Price](#)



Wind Load analysis for multiband 5G Remote Radio Unit with Antenna

Accurately estimating wind load is vital as it helps determine the appropriate materials, dimensions, and mounting methods for base station antennas. This ensures the structural integrity, stability, and ...

[Get Price](#)

Outdoor Communication Base Site R01 - Modular Power Station for

Discover the Outdoor Communication Base Site r01, a modular energy station supporting photovoltaic, wind, and generator power inputs. Ideal for communication, smart cities, and edge sites.

[Get Price](#)



Dynamic Breathing Networks with RRU Power Pooling

In addition to these traditional highlights, this solution achieves power sharing between RRU power sectors for the first time, solving the long-standing issue of power sharing failure ...

[Get Price](#)

Energy Storage Equipment, Energy storage solutions, Lithium battery

The solution adopts new energy (wind and diesel energy storage) technology to provide a reliable guarantee for the stable operation of communication base stations.

[Get Price](#)



DISTRIBUTED RENEWABLE ENERGY FOR COMMUNICATION



...

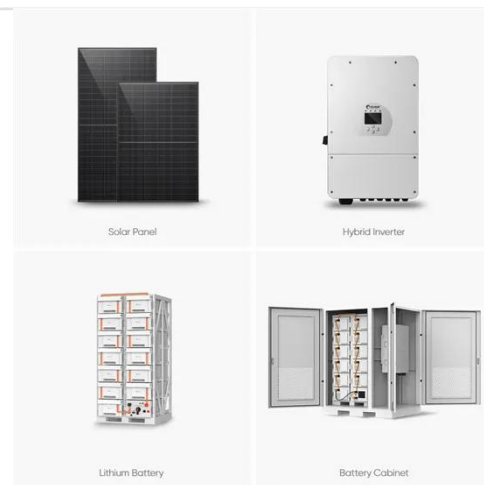
Our proven wind turbine technology can integrate directly into or beside communication towers, powering critical telecom and broadcast equipment (antennas, transceivers/radios, lighting, etc.), ...

[Get Price](#)

5G Applications , Baseband Unit , Remote Radio Units (RRU...

The first half of the transport procedure is called fronthaul, where fiber optic signals from the RRU are fine-tuned by the transponder using Wavelength Division Multiplexing (WDM) ...

[Get Price](#)



Nordic rooftop communication base station wind and solar hybrid

Discover how hybrid energy systems, combining solar, wind, and battery storage, are transforming telecom base station power, reducing costs, and boosting sustainability.

[Get Price](#)



Optimize RRU Layout for 5G Towers: Cut Loss, Boost Efficiency

Discover how strategic RRU placement reduces signal loss by 30% and cuts maintenance time by 40%. Learn fiber, power, and thermal best practices for future-proof towers. Get ...

[Get Price](#)



Contact Us

For catalog requests, pricing, or partnerships, please visit:
<https://www.pienaarshof.co.za>

