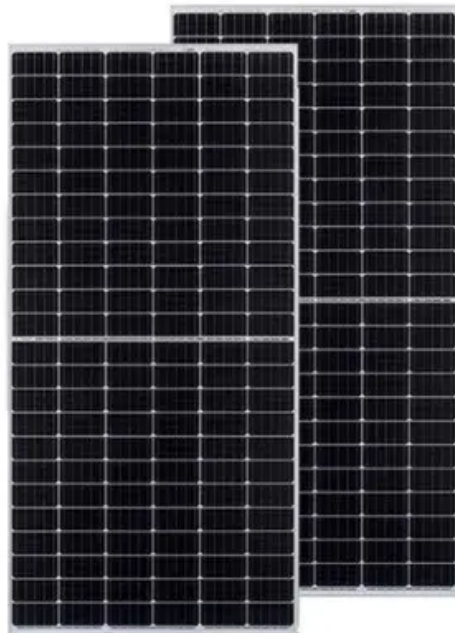


PIENAAR ENERGY (PTY) LTD

Principle of lithium battery connection to photovoltaic panel



Overview

In this comprehensive analysis, we will delve into the mechanics of how solar panels convert sunlight into electricity and how lithium batteries store that energy for later use. Connection sequence is critical for equipment safety - Always connect batteries to charge controllers before solar panels. This prevents controller damage and ensures proper system voltage detection, as charge controllers use battery voltage as their reference point. Lithium batteries offer. Connecting a solar panel to a lithium battery is a practical solution for anyone looking to go green and save on energy costs. Whether you're camping in the great outdoors or setting up a backup power source at home, this setup can make your life easier. Assess compatibility between battery and panel, 2. Properly connect components to avoid damage, 4. Lithium Iron Phosphate (LiFePO₄) batteries have become a leading choice for these systems.

Principle of lithium battery connection to photovoltaic panel



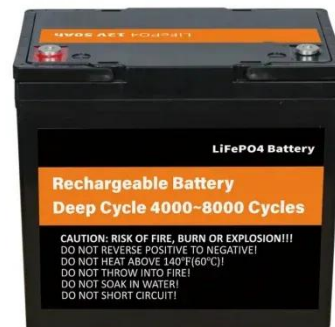
How to Connect Solar Panels to Batteries: A Step by Step Guide

Learn the step-by-step process to safely and efficiently connect solar panels to batteries, ensuring optimal energy storage and performance for your solar power system.

[Get Price](#)

The basic principle of photovoltaic energy storage lithium battery

Photovoltaic energy storage systems store excess electricity during the day in lithium batteries, ensuring a stable supply of electricity when there is no sunlight. Lithium batteries play a ...



[Get Price](#)



How to connect lithium battery to solar panel , NenPower

This process generally involves three essential connections - connecting the solar panel to the charge controller, linking the charge controller to the battery, and ensuring proper grounding.

[Get Price](#)

Integrating Solar Panels with Lithium Battery Systems

With the world steadily shifting towards sustainable energy solutions, the integration of solar panels and lithium battery systems represents a significant turning point. This combination is not just the epitome ...

[Get Price](#)



Integration of a lithium-ion battery in a micro-photovoltaic system

In the passive hybrid architecture, the battery is in parallel electrical connection to the PV module. In the active hybrid architecture, an additional DC-DC converter is used. Both architectures ...

[Get Price](#)

How to Charge Lithium Batteries with Solar Panels?

Learn how to charge lithium batteries with solar panels, including battery types, panel selection, and key components for efficient solar charging.

[Get Price](#)



LiFePO4 Battery Installation & Wiring Guide: Step-by-Step

Learn how to safely install and configure your LiFePO4 battery system. This



complete guide covers wiring, parallel/series connections, safety, and troubleshooting.

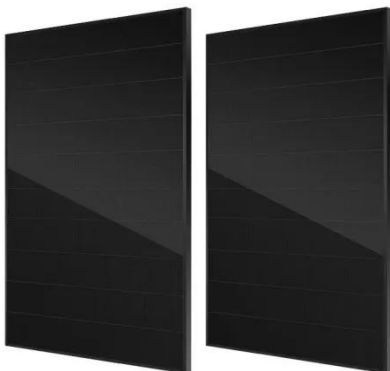
[Get Price](#)

How to Connect Solar Panels to Battery: Complete 2025 Safety Guide

Learn how to safely connect solar panels to batteries with our expert step-by-step guide. Includes wiring diagrams, safety tips, and troubleshooting advice.



[Get Price](#)



How to Connect a Solar Panel to a Lithium Battery: A Step-by-Step ...

What are the key steps to connect a solar panel to a lithium battery? Key steps include preparing the installation area, wiring the solar panel to the charge controller, connecting the ...

[Get Price](#)

How to Integrate a LiFePO4 Battery with Your Solar Panels

The standard connection sequence is:

solar panels to the charge controller's PV input, the charge controller's battery output to the LiFePO4 battery terminals, and the battery to the inverter.

[Get Price](#)



1075KWHH ESS

Contact Us

For catalog requests, pricing, or partnerships, please visit:
<https://www.pienaarshof.co.za>

