

PIENAAR ENERGY (PTY) LTD

Photovoltaic support tile installation requirements



Overview

This comprehensive guide addresses technical requirements, installation best practices, and compliance standards essential for successful tile roof photovoltaic projects. To remove an installed PV tile, the foot/footlap engagement clips holding the tile in place must be shifted into the open position by placing enough even force on the PV tile from the bottom. The patented (pat #6,360,49 on roof tops including concrete tile. This manual will also provide. Glazed tile roof: Glazed tile roof is suitable for small and medium-sized distributed PV power stations, usually using hook mounting, fixed on the roof structure (such as concrete beams or wooden beams) through stainless steel hooks, and with rails and pressure blocks to fix the PV modules. When. Performance Matches Traditional Panels: Modern solar roof tiles achieve 17-23% efficiency ratings and generate 12. Why Choose Solar Roof Tiles?

Compared to.

Photovoltaic support tile installation requirements



A Guide to Tile Roof Solar Mounting Solutions for Residential ...

Explore the challenges of installing tile roof solar mounts, preserving roof aesthetics, and ensuring long-term durability. Discover key features of effective mounting systems and essential ...

[Get Price](#)

Installing PV Tiles

It is safe to install metal tiles above, below, and to the sides of PV tiles. However, never install metal flashings over PV tiles. This will block the production of solar energy. PV tiles can also be installed at ...

[Get Price](#)



 LFP 280Ah C&I



Photovoltaic support tile installation requirements

Also known as photovoltaic solar tiles, they are conventional tiles designed to integrate photovoltaic cells that capture sunlight and convert it into electricity.

[Get Price](#)

Tile Roof Solar PV Bracket Installation Guide , Best Hardware

This comprehensive guide addresses technical requirements, installation best practices, and compliance standards essential for successful tile roof photovoltaic projects.

[Get Price](#)



Lithium battery parameters

Product capacity: 100Ah

Product size: 135*197*35mm

Product weight: 1.82kg

Product voltage: 3.2V

internal resistance: within 0.5



Glazed tile and color steel tile photovoltaic bracket installation

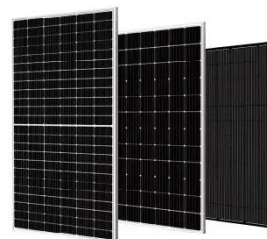
Due to the variety of tile types on color steel tile roofs, suitable clamps or welding methods need to be selected according to the tile type during installation to ensure the stability and safety of ...

[Get Price](#)

How to Install Solar on Tile Roofs: A Step-by-Step Guide

Professional installation is crucial in navigating these challenges, such as ensuring proper weight distribution and addressing tile brittleness. By prioritizing these factors, you can ...

[Get Price](#)



Solar Roof Tiles: Complete 2025 Guide To Costs, Installation & Best ...



This comprehensive guide will explore everything you need to know about solar roof tiles in 2025, including detailed manufacturer comparisons, cost analysis, installation requirements, and ...

[Get Price](#)

PV MOUNTING SYSTEM INSTALLATION MANUAL

on roof tops including concrete tile. This manual will illustrate the proper installation of the TILE TRAC® system and provide the installer general information on roof framing and roof coverings. This manual ...

[Get Price](#)



A Complete Guide to Solar Roof Tile Installation

This article systematically explains the entire solar roof tile installation process, from initial planning to ongoing maintenance, providing a practical construction and investment reference guide ...

[Get Price](#)

Solar Roof Design and Construction Guide

Power producing PV Tiles made from

glass and fiber-reinforced engineered polymers are installed in areas with direct sunlight. Non-power producing tiles are made from architectural grade, coated ...

[Get Price](#)



Contact Us

For catalog requests, pricing, or partnerships, please visit:
<https://www.pienaarshof.co.za>

