

PIENAAR ENERGY (PTY) LTD

Photovoltaic power station bracket orientation requirements



Overview

The angle and orientation of these brackets are crucial, as they directly influence the power output of the photovoltaic system. This report is available at no cost from the National Renewable Energy Laboratory (NREL) at www.nrel.gov. National Renewable Energy Laboratory, Sandia National Laboratory, SunSpec Alliance, and the SunShot National Laboratory Multiyear Partnership (SuNLaMP) PV O&M Best Practices. The Renewable Energy Ready Home (RERH) specifications were developed by the U. Environmental Protection Agency (EPA) to assist builders in designing and constructing homes equipped with a set of features that make the installation of solar energy systems after the completion of the home's. Safety Analysis under Extreme Operating Conditions For flexible PV brackets, the allowable deflection value adopted in current engineering practice is 1/100 of the span length. Site-Specific Load Calculations You wouldn't use desert-grade brackets in Minnesota, right?

Wind/snow load requirements vary wildly: 2.

Photovoltaic power station bracket orientation requirements



A Guide to Large Photovoltaic Powerplant Design

PV module configuration refers to whether individual panels are mounted in landscape or portrait orientation as well as how they are connected to each other within each string. Both ...

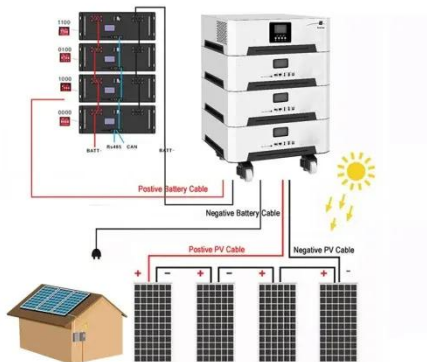
[Get Price](#)

Design of photovoltaic bracket

The angle and orientation of these brackets are crucial, as they directly influence the power output of the photovoltaic system. By optimizing the placement and alignment of these brackets, the



[Get Price](#)



Photovoltaic Power Station Bracket Selection Requirements: A 2024

With the global solar market projected to grow by 15.7% CAGR through 2030, getting bracket selection right has never been more critical. Let's cut through the noise - here's what actually matters when ...

[Get Price](#)

Solar Photovoltaic: SPECIFICATION, CHECKLIST AND GUIDE

The energy output of a solar energy system is optimized by siting the array where the roof is oriented due south at an 180o azimuth (on a compass dial that is corrected for magnetic declination).

[Get Price](#)



Photovoltaic power station bracket installation angle

A photovoltaic system, also called a PV system or solar power system, is an electric power system designed to supply usable solar power by means of photovoltaics consists of an arrangement of ...

[Get Price](#)

Codes and Standards

The safe and reliable installation of photovoltaic (PV) solar energy systems and their integration with the nation's electric grid requires timely development of the foundational codes and standards governing ...

[Get Price](#)



Photovoltaic power generation bracket opening orientation ...

According to modern grid codes (GCs), high penetration of photovoltaic power



plants (PVPPs) to the utility grid requires a reliable PV generation system by achieving fault

[Get Price](#)

Latest version of photovoltaic embedded bracket specification

Types of Solar Panels Brackets. There are different types available, including railless brackets, and top-of-pole mounts, the specific type of bracket or clamp chosen



[Get Price](#)



Photovoltaic bracket product requirements and standards

Photovoltaic Bracket -Nanjing Chinylion Metal Products Co., Ltd.-Photovoltaic bracket is mainly applicable to distributed power stations, rooftop power stations, household, commercial and

[Get Price](#)

Solar Photovoltaic: SPECIFICATION, CHECKLIST AND GUIDE

Made by solar engineers Free trial
available now Full-cycle automation

[Get Price](#)



Best Practices for Operation and Maintenance of Photovoltaic ...

Power optimizers work similar to micro-inverters but shut down the DC power coming from the power optimizers to the inverters. Each power optimizer will output only 1 V, meaning that the string ...

[Get Price](#)

Contact Us

For catalog requests, pricing, or partnerships, please visit:
<https://www.pienaarshof.co.za>

