

**PIENAAR ENERGY (PTY) LTD**

# **Photovoltaic panels are safely installed on the roof**



## Photovoltaic panels are safely installed on the roof

---



### How To Mount Solar Panels To The Roof: Complete 2025 Guide

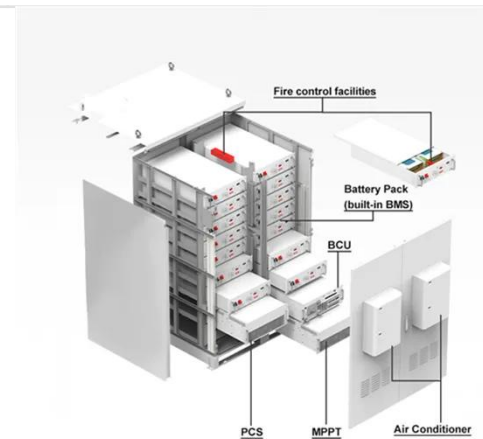
Learn how to safely mount solar panels to your roof with our step-by-step guide. Covers all roof types, tools needed, safety tips, and when to hire professionals.

[Get Price](#)

### Does Solar Panel Installation Damage Your Roof? Top Guide

No, solar panels won't damage your roof if installed properly. Professional installers ensure they're securely mounted, using roof-friendly methods to avoid leaks or structural issues. ...

[Get Price](#)



### How to Install Solar Panels on Your Roof Safely , Live to Plant

This comprehensive guide will walk you through how to install solar panels on your roof safely, ensuring that your investment is both effective and secure. Understanding the Importance of ...

[Get Price](#)



## Will Solar Panels Damage Your Roof? A Homeowner's Guide to Safe

When installed correctly, solar panels do not damage roofs. In fact, they can provide added protection from UV rays, hail, and extreme weather. In this guide, we'll explore the installation ...

[Get Price](#)



## 7 Essential Safety Measures for Photovoltaic Roof Installation

When installing photovoltaic panels on your roof, prioritize safety with these seven essential measures. Start by thoroughly evaluating your roof's condition and load-bearing capacity.

[Get Price](#)

## Homeowner's Guide to Solar , Department of Energy


Since 2008, hundreds of thousands of solar panels have been installed across the country as more and more Americans choose solar energy for their daily lives. Investments from the U.S. Department of ...

[Get Price](#)



## The Complete Guide To Rooftop Solar Mounting [2025]



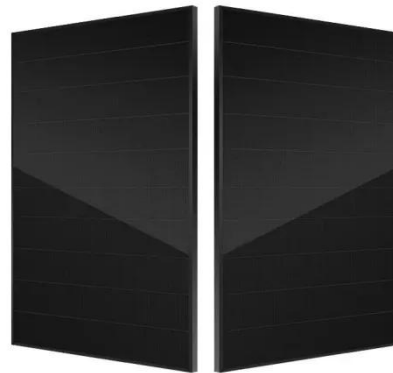
- 
**Efficient Higher Revenue**
  - Max. Efficiency 97.5%
  - Max. PV Input Voltage 600V
  - 150% Peak Output Power
  - 2 MPPT Trackers, 150% DC Input Oversizing
  - Max. PV Input Current 16A, Compatible with High Power Modules
- 
**Intelligent Simple O&M**
  - IP65 Protection Degree: support outdoor installation
  - Smart I-V Curve Diagnosis Function: locate PV string faults accurately and automatically detect faults
  - DC & AC Type II SPD: prevent lightning damage
  - Battery Reverse Connection Protection
- 
**Flexible Abundant Configuration**
  - Plug & Play, EPS Switching Under 30ms
  - Compatible with Lead-acid and Lithium Batteries
  - Max. 6 units Inverters Parallel
  - AFCI Function (Optional): when an arc fault is detected the inverter immediately stops operation

Solar panels can't be put on a roof without first having mounting brackets installed. The solar panels are shielded from the elements by the mounting and solar racking system, which can ...

[Get Price](#)

## Are Solar Panels Harmful To Your Health?

Solar panels contain materials like silicon and aluminum, but are safely encapsulated, reducing potential exposure to harmful substances. Research shows no link between solar panels ...



[Get Price](#)

 **TAX FREE**    

**Product Model**  
 HJ-ESS-215A(100KW/215KWh)  
 HJ-ESS-115A(50KW/115KWh)

**Dimensions**  
 1600\*1280\*2200mm  
 1600\*1200\*2000mm

**Rated Battery Capacity**  
 215KWH/115KWH

**Battery Cooling Method**  
 Air Cooled/Liquid Cooled



## Residential Solar Panel Requirements

NFPA 1 provides guidance on how solar photovoltaic panels must be installed on the roofs of homes.

[Get Price](#)

## Is it Safe to Have Solar Panels on Your Roof?

When installed properly, following all safety measures, and adhering to

industry standards, there are no health risks associated with installing or maintaining solar panels on your roof.

[Get Price](#)



---

## Contact Us

For catalog requests, pricing, or partnerships, please visit:  
<https://www.pienaarshof.co.za>

