

PIENAAR ENERGY (PTY) LTD

Photovoltaic panel snow blocking fixture installation distance



Overview

It's placed at the edge of your roof and fastened to gather snow as it comes off the solar panels. To work effectively, it needs 18-24 inches of space between the lowest panel and the roof edge. Snow guards for solar panels are protective devices that prevent dangerous snow avalanches from solar installations while maintaining energy production during winter months. 00 per linear foot for materials plus \$8-12 per linear foot for professional. In this article, we'll explore various protective measures you can take to ensure your solar panels continue functioning efficiently, even when the weather outside is frightful. From simple adjustments during installation to high-tech solutions, we've got you covered. This snow guard has a maximum snow capacity of 50 pounds per square foot, perfect for homes in areas with moderate snow.

Photovoltaic panel snow blocking fixture installation distance



Snow Guards for Solar Panels: What You Need to Know

When selecting your PV panels, you should discuss snow guard options with your provider to safely remove snow. Two ...

[Get Price](#)

Snow Guards For Solar Panels: Cost, Types & Installation Guide

Solar panels require snow guards in regions receiving 20+ inches of annual snowfall because the smooth glass surface eliminates natural friction that textured roofing provides.



[Get Price](#)

ESS



How to Protect Solar Panels from Snow and Ice? Explained

One of the simplest yet most effective ways to protect your solar panels from snow accumulation is to get the tilt angle right during installation. During installation, aim for a tilt angle ...

[Get Price](#)

Photovoltaic panel snow blocking fixture installation requirements

Simple - 1 and 2 Stage Charge Controllers: Relay and shunt resistor are used to control the voltage in single or two stages to disconnect the solar panel from the battery in



[Get Price](#)



AceClamp Solar Snow Guards: Preventing Snow Slide on Solar Panels

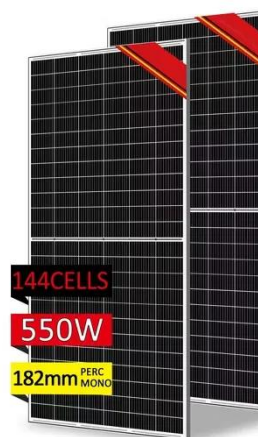
Some jurisdictions mandate a specific, clear distance between the array and the eave and valleys of adjacent roof sections, often three feet or more. Discuss with your installer about the impacts of ...

[Get Price](#)

How Should Snow Guards Be Installed? - AHODSOLAR

For solar systems, snow guards should be installed below the solar panels and along areas that tend to accumulate snow, especially where the panels meet the roof. Select the right type ...

[Get Price](#)



Should you install snow guards for solar panels?

Installing snow guards for solar panels can prevent this issue, but they're not a necessary investment for every homeowner. Let's dive into what snow guards are and why you may ...



[Get Price](#)

Snow Guards for Solar Panels: What You Need to Know

The installation of snow guards for solar panels varies widely depending on the style you choose, the size of your roof, and the number of solar panels you install.

[Get Price](#)



Snow Guards for Solar Panels

By installing snow guards, you can prevent snow buildup and ensure that your solar panels generate maximum power throughout winter. Snow avalanches from rooftops pose a serious risk to people ...

[Get Price](#)

Complete Guide on Solar Panel Snow Guard

When selecting your PV panels, you should discuss snow guard options with your provider to safely remove snow.

Two main types are available: Clamp-on guards and snow fences.

[Get Price](#)



Solar Panel Setback From Roof Edge: Guidelines, Codes, and Best

Snow and debris management: In areas with heavy snowfall, setbacks of 1 to 2 feet help prevent snow build-up directly under panels and maintain drainage.

[Get Price](#)

Contact Us

For catalog requests, pricing, or partnerships, please visit:
<https://www.pienaarshof.co.za>

