

PIENAAR ENERGY (PTY) LTD

Photovoltaic panel clamp bolt torque standard



Overview

The ET installation manual recommends the clamp bolt should be torqued to 8-10 Nm (6-7). I would like to use the higher value to insure the panels are secure in high wind conditions but I do not want to risk damage. Please refer to the below chart for the appropriate torque specs. Do NOT tighten with impact gun. *Photos shown are for representative purposes only. Design. I am installing ET Solar panels (ET-P660230B) on Unirac HD rails using top-mounted clamps. Learn the difference between mid and end clamps, material selection, torque specs, and installation best practices. Trina suggests using M8 bolts to f x the clamp.

Photovoltaic panel clamp bolt torque standard



What is the acceptable torque for photovoltaic panel screws

The performance PV standards described in this article, namely IEC 61215 (Ed. 2 - 2005) and IEC 61646 (Ed.2 - 2008), set specific test sequences, conditions and requirements for the design

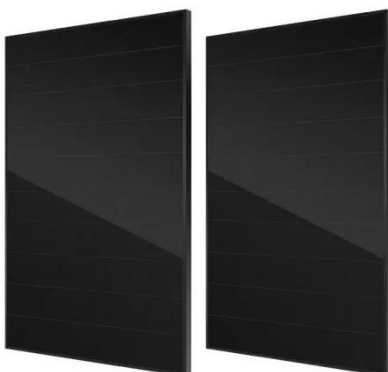
[Get Price](#)

Standard torque value of photovoltaic panel screws

When securing photovoltaic (PV) bolts during the installation of solar panels, applying the correct torque is critical to ensure a secure mount without causing damage to the



[Get Price](#)



Get Your Torque Right: Key to a Reliable Solar Mounting System

Bolt torque refers to the amount of force applied when tightening a bolt. This force determines how securely the bolt holds the components of your solar racking system together. Proper torque is ...

[Get Price](#)

Solar Panel Mounting Clamps: The Ultimate Guide , Ziyuan Solar

Discover everything about solar panel mounting clamps in our expert guide. Learn the difference between mid and end clamps, material selection, torque specs, and installation best practices.

[Get Price](#)



Photovoltaic panel tightening torque standard

Although the standard gives the possibility to perform the test for a range of cell temperatures (25 & #176; C to 50 & #176; C) and irradiance levels (700 W/m² to 1,100 W/m²), it is common practice among

[Get Price](#)

Panel Torque Spec?

What is the proper torque for panel hold down bolts mid clamp and end clamp with the metal grounding nut?

[Get Price](#)



Photovoltaic Panel Tightening Torque Standards: The Ultimate Guide for

As solar energy adoption grows



exponentially (global installations up 42% YoY according to the 2024 Renewable Energy Report), getting the basics right has never been more crucial. Let's cut through the ...

[Get Price](#)

Torque Specs: Solar

Please refer to the below chart for the appropriate torque specs. Do NOT tighten with impact gun. For other styles or materials not shown here, feel free to contact the Engineers at AceClamp for further assistance. ...



[Get Price](#)



Does higher Torque Value on installation damage PV module?

As long as the module is seated flat on level rail, proper torque on the clamp bolt will not hurt it. You will, however, gall the stainless bolts or bend the clamps if you over-torque. Many installers go with the lighter ...

[Get Price](#)

What torque settings are recommended when photovoltaic bolts to ...

When securing photovoltaic (PV) bolts during the installation of solar panels, applying the correct torque is critical to ensure a secure mount without causing damage to the bolts or the mounting structure.

[Get Price](#)



Contact Us

For catalog requests, pricing, or partnerships, please visit:
<https://www.pienaarshof.co.za>

