

PIENAAR ENERGY (PTY) LTD

Module 660 solar panel price



Overview

Current Market Prices: On average, one panel costs between \$500 and \$800. Comparison with Other Panels: 600-watt panels typically cost \$450–700, while 640-watt. With an efficiency of up to 22.06% and an output of 655W to 685W, this SP685M-66H all-black solar module ensures maximum energy generation, making it ideal for residential and commercial installations. 20-660 is a high-power bifacial dual-glass module using monocrystalline high-density-interconnect cells, delivering 660 Wp with a module efficiency of $\approx 21.2\%$; it measures $2384 \times 1303 \times 33$ mm and weighs ≈ 38 . Excellent temperature coefficient and low irradiation performance result in higher power generation.

Module 660 solar panel price



ZnShine Solar 660W Solar Panel 132 Cell Bifacial ZXM8-TPLDD132-660

Among the newest offerings of ZnShine Solar, ZXM8-TPLDD132-660 is part of the ZXM8-TPLDD132 series. These panels use state-of-the-art technology to achieve high efficiency and dependability.

[Get Price](#)

Trina Solar TSM-660DEG21C.20

We show you the best offers from leading and verified photovoltaic dealers. Compare prices for solar products with one click and save on every purchase. Make a non-binding inquiry; you can then ...



[Get Price](#)



LonGi 660W Solar Panel (LR7-72HYD-660M) - TSolar

The LonGi 660W Solar Panel is equipped with dual-glass construction, enhancing durability, and features an anodized aluminum alloy frame. Its outstanding mechanical loading capabilities can ...

[Get Price](#)

660W Half-cell PERC Monocrystalline Solar Panel

As one of the leading 660w half-cell perc monocrystalline solar panel manufacturers and suppliers in China, we warmly welcome you to wholesale high quality Mono Solar Panel made in China here from ...



[Get Price](#)



Large Solar Panels Mono 650W 660W 680W 685W Half Cut 132Cells

We are best Large Solar Panels Mono 650W 660W 680W 685W Half Cut 132Cells Monocrystalline PV suppliers, we supply best 650w solar panel for sale.

[Get Price](#)

Solar Panel Bifacial Half-cut Monocrystalline 660 Wp

SOLAR PANEL 660 WATTS , TRINA SOLAR , Bifacial Half-cut , Monocrystalline , 132 Cells PV Module , Power tolerance 0/+5W , L 2384mm W 1303mm D 33mm , 38.30kg , Material Warranty 12 years , ...

[Get Price](#)



Mono PERC Bifacial Double Glass Photovoltaic Solar Panel 650Watt ...



Based on 210mm silicon wafer and 132 half-cut mono-crystalline PERC cell, the Evo 6 Series photovoltaic panels comes with several innovative design features allowing higher output power up ...

[Get Price](#)

660W/670W/680W All Black Monofacial PERC PV ...

With an efficiency of up to 22.06 % and an output of 655W to ...

[Get Price](#)



660W/670W/680W All Black Monofacial PERC PV Module For ...

With an efficiency of up to 22.06 % and an output of 655W to 685W, this SP685M-66H all-black solar module ensures maximum energy generation, making it ideal for residential and commercial ...

[Get Price](#)

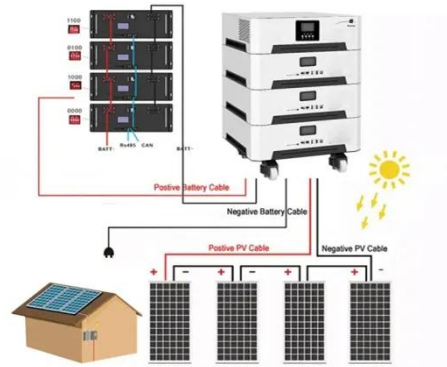


How much does a 660 watt solar panel cost? , NenPower

The \$1,200 to \$2,000 price range for a

660-watt panel aligns with a broader analysis of solar energy economics. Factors such as installation requirements, brand reputation, and efficiency ...

[Get Price](#)



660 watt solar panel for sale , Buy online for home, boat and RV

Discover everything you need to know about 660-watt solar panels: their benefits, cost, efficiency, and installation tips. Learn how these high-power panels can save money and energy for ...

[Get Price](#)

Contact Us

For catalog requests, pricing, or partnerships, please visit:
<https://www.pienaarshof.co.za>

