

**PIENAAR ENERGY (PTY) LTD**

# **Maximum capacity of each photovoltaic panel**



## Overview

---

Today in 2025, we're seeing commercially available panels reaching close to 750W, and early production modules already exceeding 760W, with several manufacturers targeting 800W+ within the next two years. If you want to calculate how many solar panels you can put on your roof, you will obviously need to know the size of a solar panel. Example: 5kW solar system is comprised of 50 100-watt solar panels. A key factor in this leap forward has been the transition to larger wafer formats, such as M10. You can now see bifacial photovoltaic panels that reach up to 725W. Solar Panel Wattage Divide the average daily wattage usage by the average sunlight hours to measure solar panel wattage. This standardized testing environment is known as Standard Test Conditions (STC), which allows for independent comparison of.

## Maximum capacity of each photovoltaic panel



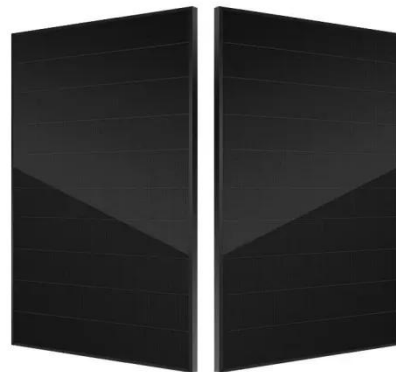
### standard solar photovoltaic panel sizes explained

Absolutely--commercial and utility projects often use larger 72-cell or 96-cell solar photovoltaic panel sizes, which can be 78 inches or longer. Since commercial roofs and ground ...

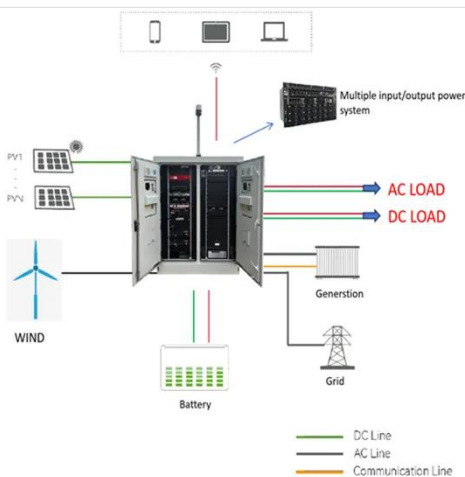
[Get Price](#)

## Installed solar energy capacity

Depending on the data, this can include standardizing country names and world region definitions, converting units, calculating derived indicators such as per capita measures, as well as ...



[Get Price](#)



### Solar Panel Sizes and Wattage Explained

Best Solar Panel Sizes and Wattage Calculator This curated list includes top-brand calculators for determining panel size, output and battery capacity for your system along with wattage ...

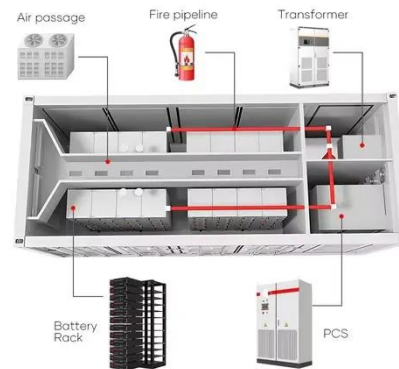
[Get Price](#)

## Maximum Power Ratings of

## Modern PV Panels: Understanding How ...

Maximum power rating shows the most electricity a panel can make in perfect lab conditions. You use this number to compare different panels and plan your solar system.

[Get Price](#)



## Most powerful solar panels 2025

Today in 2025, we're seeing commercially available panels reaching close to 750W, and early production modules already exceeding 760W, with several manufacturers targeting 800W+

...

[Get Price](#)

## Solar Panel Size & Dimensions Guide 2025 , Complete Specs

At 40-46 pounds, they can be safely handled by installers while maximizing energy production per square foot. Roof Load Capacity is Rarely a Limiting Factor: Solar panels add only 3-4 ...

[Get Price](#)



## Standard Solar Panel Sizes And Wattages (100W-500W Dimensions)



The goal here is to get to the average solar panel size by wattage. You can find typical dimensions of 100W, 150W, 170W, 200W, 200W, 220W, 300W, 350W, 400W, and 500W solar panels summarized ...

[Get Price](#)

---

## Solar Panel Capacity: A Full Guide to Choosing Solar Panels

Solar panel capacity refers to the maximum power output of a solar panel and is typically measured in watts (W). Understanding solar panel capacity is critical when determining how much ...

[Get Price](#)



## Solar Panel Ratings Explained

Now, let's explore the meaning of each solar panel rating. The Wattage rating of a solar panel is the most fundamental rating, representing the maximum power output of the solar panel ...

[Get Price](#)

---

## What Is PV Capacity and How Is It Calculated?

The total nameplate capacity of a PV system is determined by the sum of the individual module capacities installed on

the site. For example, a system consisting of twenty solar panels, ...

[Get Price](#)



---

## Contact Us

For catalog requests, pricing, or partnerships, please visit:  
<https://www.pienaarshof.co.za>

