

PIENAAR ENERGY (PTY) LTD

Lithium battery energy storage device maintenance



Overview

Charge or discharge the battery to approximately 50% of capacity before storage. Store the battery at temperatures between 5 °C and 20 °C (41 °F). To ensure the safe and efficient operation of 215kWh/241kwh/261kwh/1. Read and follow the guidelines in this document to safely use Lithium-Ion batteries and achieve the maximum battery life span Do not leave batteries unused for extended periods of time, either in the. This guide provides a comprehensive overview of lithium battery maintenance best practices, exploring everything from charging habits to environmental conditions, and from comparisons with other battery chemistries to future innovations. At CompanyName, we have compiled a. Regular battery maintenance should be carried out to help maintain safety. In terms of safety, it's also important that first responders such as fire services can gain access to the battery site if needed. Batteries are not 100% efficient when it comes to renewable energy storage.

Lithium battery energy storage device maintenance



Best Practices for Charging, Maintaining, and Storing Lithium Batteries

Properly maintaining and caring for your lithium-ion batteries can mitigate the effects of battery aging. By implementing storage guidelines, charging practices, and avoiding excessive discharge, you can ...

[Get Price](#)

Lithium-Ion Battery Maintenance and Proper Usage Methods: A Must ...

Proper maintenance and usage are crucial for ensuring the optimal performance, safety, and longevity of lithium-ion batteries. By avoiding deep discharges, using appropriate chargers, operating within ...

[Get Price](#)



Lithium-Ion Battery Maintenance Guidelines

This guide provides a comprehensive overview of lithium battery maintenance best practices, exploring everything from charging habits to environmental conditions, and from ...

[Get Price](#)



Energy Storage Battery Maintenance

Proper energy storage battery maintenance is crucial for performance, safety, and cost-efficiency. By following these best practices-- regular inspections, proper charging, environmental control, and ...



[Get Price](#)



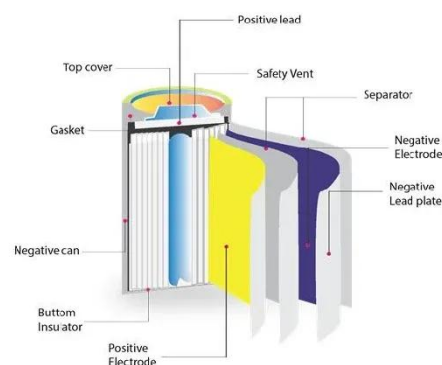
Lithium Battery Maintenance: How to Extend Battery Lifespan

This guide provides a comprehensive overview of lithium battery maintenance best practices, exploring everything from charging habits to environmental conditions, and from ...

[Get Price](#)

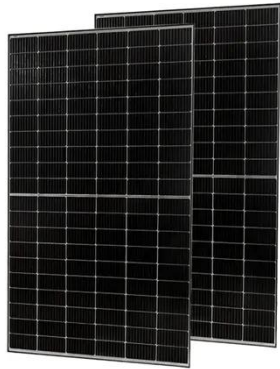
Best Practices for Charging, Maintaining, and Storing Lithium Batteries

Proper maintenance and usage are crucial for ensuring the optimal performance, safety, and longevity of lithium-ion batteries. By avoiding deep discharges, using appropriate chargers, operating within ...



[Get Price](#)

Maintenance Guide for Energy



Storage Lithium Battery System

To ensure the safe and efficient operation of 215kWh/241kwh/261kwh/1.2MW lithium battery systems and maximize their service life (which can reach 10 years or more), please follow ...

[Get Price](#)

Energy Storage System Maintenance , RS

A guide to energy storage system maintenance and the use of batteries in renewable energy and backup power applications for optimal performance.

[Get Price](#)



Industrial Lithium-Ion Battery Maintenance Guidelines

To harness the full potential of these batteries, proper maintenance is critical. This guide explores comprehensive lithium-ion battery maintenance tips for industrial use and outlines best ...

[Get Price](#)

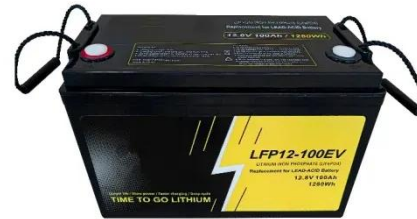


Lithium-Ion Battery Maintenance Guidelines

Charge or discharge the battery to approximately 50% of capacity before storage. Charge the battery to

approximately 50% of capacity at least once every six months. Remove the battery and store it ...

[Get Price](#)



Lithium Battery Maintenance Guide -- Lectron EV

Follow these tips to minimize permanent capacity loss, avoid battery discharge, and keep your battery in optimal condition. a. Avoid Full Discharge and Overcharging. One of the most ...

[Get Price](#)

Residential Energy Storage System Maintenance: Tips for Long ...

Learn how to keep your residential energy storage system clean, monitor battery health, perform simple inspections, and schedule professional check-ups. Discover practical advice to ...

[Get Price](#)



[Contact Us](#)

For catalog requests, pricing, or partnerships, please visit:
<https://www.pienaarshof.co.za>

