

## PIENAAR ENERGY (PTY) LTD

# Lithium batteries make up the battery pack



## Overview

---

A lithium-ion battery pack is an assembly of lithium-ion cells, a battery management system, and various supporting components all contained within an enclosure. They power a vast array of applications, from consumer electronics to electric vehicles, and require careful engineering to. In an era driven by portable power and sustainable energy, the lithium-ion battery pack stands as a pivotal innovation. Graphite remains the go to material for most anodes because it works well electrochemically and doesn't cost too much money. Getting a handle on how these lithium ion rechargeable battery packs work—including their core types, common sizes like 18650 and 21700, and key factors that impact.

## Lithium batteries make up the battery pack



### Lithium Battery Pack Assembly Process: What You Need to Know

In this guide, we'll take a detailed look at each stage of the battery pack assembly process, from battery pack design to delivery, exploring best practices that go into creating high-quality, safe, and efficient ...

[Get Price](#)

### The Lithium-Ion Battery Pack: Core Components & Defining Features

This article delves into the core components that constitute a lithium-ion battery pack and explores the five key features that make it a superior choice over traditional technologies like lead ...



[Get Price](#)



### Li Ion Battery Pack: A Complete Guide to How They Work and Perform

A li ion battery pack is an integrated set of lithium ion battery cells wired together to create a reliable, rechargeable power source for all kinds of devices.

[Get Price](#)

## How Do Lithium Battery Packs Work?

Lithium batteries rely on three main components working together the anode, cathode, and electrolyte to function properly and deliver good performance. Most anodes are made from ...



[Get Price](#)

---



## How Does a Lithium Battery Work? A Complete Guide

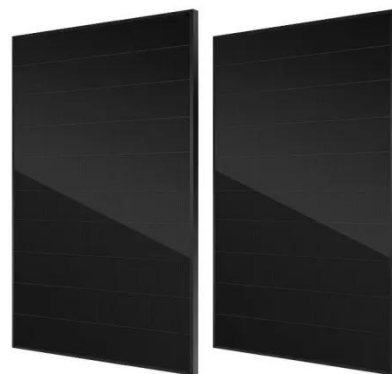
Learn how does a lithium battery work, from its internal components to the chemistry behind its performance. Explore types, safety risks, and the future of lithium-ion technology.

[Get Price](#)

---

## The Ultimate Guide For Lithium-Ion Battery Packs ...

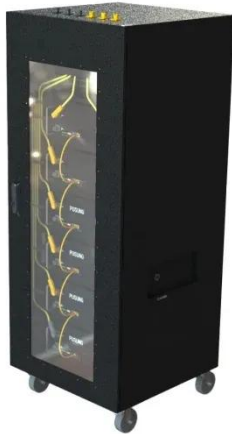
This in-depth guide explores lithium-ion battery packs from the inside out. Learn about the key components like cells, BMS, thermal management, and enclosure.



[Get Price](#)

---

## Complete Guide to Lithium Battery Pack Design and Assembly



What is a Lithium Battery Pack? A lithium battery pack is an integrated battery system. It is built by connecting many individual cells in series and parallel. It includes a Battery Management ...

[Get Price](#)

---

## What Materials Form Lithium Batteries? A Comprehensive Guide

What metals makeup lithium batteries? Lithium batteries primarily consist of lithium, commonly paired with other metals such as cobalt, manganese, nickel, and iron in various ...

[Get Price](#)



---

## Understanding the Components of a Battery Pack

Explore the key components and advanced technologies of lithium-ion battery cells, focusing on anode materials, cathode performance, electrolytes, and separators.

[Get Price](#)



---

## How Do Lithium-Ion Battery Packs Function? -- Large Battery

By understanding these components, you can see how each part contributes to the overall functionality of a lithium-ion battery pack. Together, the anode, cathode, and electrolyte form ...

[Get Price](#)



- Efficient Higher Revenue**
  - Max. Efficiency 97.5%
  - Max. PV Input Voltage 600V
  - 150% Peak Output Power
  - 2 MPPT Trackers, 150% DC Input Overvoltage
  - Max. PV Input Current 16A, Compatible with High Power Modules
- Intelligent Simple O&M**
  - IP66 Protection Degree: support outdoor installation
  - Smart I-V Curve Diagnosis Function: locate PV string faults accurately and automatically detect faults
  - DC & AC Type II SPDs prevent lightning damage
  - Battery Reverse Connection Protection
- Flexible Abundant Configuration**
  - Plug & Play, EPS Switching Under 15ms
  - Compatible with Lead-acid and Lithium Batteries
  - Max. 6 units Inverters Parallel
  - AFCC Function (Optional): when an arc fault is detected the inverter immediately stops operation

## Contact Us

For catalog requests, pricing, or partnerships, please visit:  
<https://www.pienaarshof.co.za>

