

PIENAAR ENERGY (PTY) LTD

Installation angle of solar panels



Installation angle of solar panels



Solar Panel Best Angle , Tilt & Orientation Guide 2025

Find the best solar panel angle for your location. Learn tilt formulas, seasonal adjustments, and tips to maximize energy efficiency in 2025.

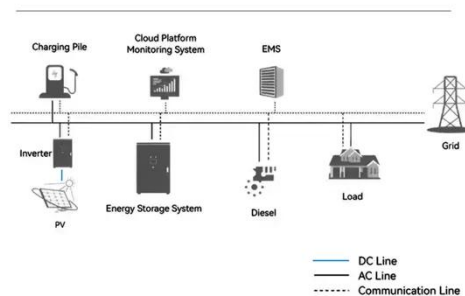
[Get Price](#)

Solar Angle Secret: Are Your Panels Tilted Right?

Fixed-panel installations either prioritize a particular season if energy needs vary greatly or compromise, aiming for an angle that performs pretty well across all seasons. Every day, the sun ...

[Get Price](#)

System Topology



What's the Best Angle for Solar Panels to Get Maximum Output?

When looking for the right tilt for your solar panels, the latitude rule works in most cases. However, if you live in locations beyond 30-45 degrees, or you want the most precise orientation ...

[Get Price](#)

Solar Panel Direction & Orientation: 2025 Complete Guide

Orientation refers to the cardinal direction your solar panels face (north, south, east, or west), also known as the azimuth angle. Tilt angle describes the vertical angle of your panels relative ...

[Get Price](#)



Optimal Solar Panel Angle: Maximizing Efficiency and Energy Output

South-facing solar panels typically yield the highest energy production, while east-west facing roofs can still be effective. The direction of your solar panels is generally more important than ...

[Get Price](#)

Best Angle And Orientation For Solar Panels - Forbes Home

Solar panel angle is simply the vertical tilt of your solar panels. It can be a little more tricky to understand since the proper tilt will vary with geographic location and time of year .

[Get Price](#)



The Best Angle for Solar Panel Installation



In general, solar panels should be installed so the sunlight hits them at as close to a perpendicular 90-degree angle for as long as possible during the day. To achieve that goal, most ...

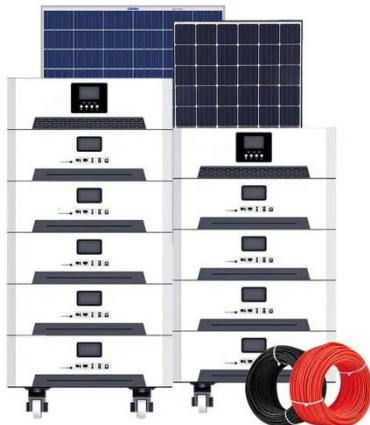
[Get Price](#)

What's the Best Angle for Solar Panels? , EnergySage

Below, we'll get into the finer details of the ideal direction and angle for solar panels, how it varies depending on where you live, and what it takes to truly optimize your panels' electricity output.



[Get Price](#)



Solar Panel Tilt Angle Calculation: Complete Guide 2025

Proper positioning can increase your solar installation's electricity production by up to 25%. In this comprehensive guide, discover how to calculate the ideal angle to maximize your energy savings ...

[Get Price](#)

Best Angle for Solar Panel Installation: Complete Guide 2025

Discover the best angle for solar panels in 2025. Learn tilt, direction, and tips to boost efficiency using solar panel angle calculators.

[Get Price](#)



Contact Us

For catalog requests, pricing, or partnerships, please visit:
<https://www.pienaarshof.co.za>

