

PIENAAR ENERGY (PTY) LTD

Huawei Communication Base Station Charging

1mwh (500kw/1mw)

**AIR COOLING
ENERGY STORAGE CONTAINER**



Overview

According to Hou Jinlong, President of Huawei Digital Power, at the World New Energy Vehicle Conference in December 2023, Huawei plans to deploy more than 100,000 fully liquid-cooled ultra-fast charging piles in more than 340 cities and major highways across the country in. According to Hou Jinlong, President of Huawei Digital Power, at the World New Energy Vehicle Conference in December 2023, Huawei plans to deploy more than 100,000 fully liquid-cooled ultra-fast charging piles in more than 340 cities and major highways across the country in. Enerji SA worked with Zebra and Huawei to build the first liquid-cooled ultra-fast charging station in Türkiye. The innovative and inclusive Huawei FusionCharge DC Charging Power Unit can cooperate with partners' charging dispensers to share resources and benefits in complementary ways. Huawei. This document describes the small C&I PV+ESS on-grid solution in terms of networking, cable connections, and device commissioning. Register an installer account required for deployment and commissioning. Built along the lines of a Micro-Grid Energy System (MGES), it comprises four. The 5G-A smart base station (5G-A52) released by Huawei this time integrates the Ascend AI chip (presumably Ascend 910B or a customized version) in the base station hardware for the first time to achieve localized AI computing power support. An innovative. With its fully liquid-cooled ultra-fast charging technology, Huawei Digital Power is actively deploying supercharging networks, aiming to solve the problem of electrification of commercial vehicles and provide strong support for industry transformation. Technological innovation: the advantages.

Huawei Communication Base Station Charging



Exploring Huawei's Advanced 5G Base Station Technology: Key

In a pilot project conducted in Berlin, Huawei's energy-efficient base stations demonstrated a 30% reduction in energy consumption compared to traditional 4G stations.

[Get Price](#)

Digitalizing site power for green connectivity and computing

Huawei is accelerating the digital transformation of base stations by adopting AI and IoT. Harnessing these digital technologies, 5G Power optimizes coordinated scheduling between various systems, ...



[Get Price](#)



Huawei Deploys 800km Ultra Fast Charging Stations to Boost ...

With its fully liquid-cooled ultra-fast charging technology, Huawei Digital Power is actively deploying supercharging networks, aiming to solve the problem of electrification of commercial ...

[Get Price](#)

Huawei FusionCharge Fully Liquid-Cooled Ultra-Fast Charging

Liquid-cooled power unit is the core part of ultra-fast DC charging system for public charging station and other sites demanding multiple fastchargers. With AC/DC and DC/DC modules decoupled, power ...

[Get Price](#)

Uninterrupted remote site power supply

Considering that remote base stations must be highly-integrated, inexpensive, and modest, Huawei has developed its all-on-pole EasySite solution, which integrates the base station, antennas, ...

[Get Price](#)

Enterprise Wireless

For governments and industries such as transportation and energy, our enterprise wireless provides purpose-built mobile communications supported by 4G/5G base stations, microwave, and core ...

[Get Price](#)

HUAWEI BASE STATION KNOWLEDGE BASE AMP FAQ



HUAWEI

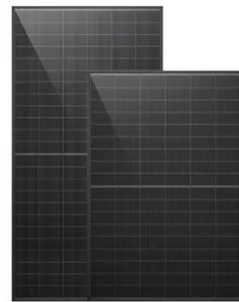
Huawei Communication Base Station Inverter Grid-Connected Commissioning
This document describes the small C& I PV+ESS on-grid solution in terms of networking, cable connections, and device ...

[Get Price](#)

BASE STATION HUAWEI BBU5900 SERIES 5G LTE

Base station operators deploy a large number of distributed photovoltaics to solve the problems of high energy consumption and high electricity costs of 5G base stations.

[Get Price](#)



Smart Charging Network with FusionCharge , Huawei Digital Power

Huawei Smart Charging Network integrates FusionCharge solutions with liquid-cooled fast charging and modular design to support efficient, reliable EV infrastructure.

[Get Price](#)

Huawei's world's first 5G-A smart base station technology analysis and

Intelligent energy consumption regulation: AI dynamically adjusts the base station power according to the density of people and business load, such as automatically switching to low power ...

[Get Price](#)



Contact Us

For catalog requests, pricing, or partnerships, please visit:
<https://www.pienaarshof.co.za>

