

PIENAAR ENERGY (PTY) LTD

How many watts of solar energy are there in 28 square meters



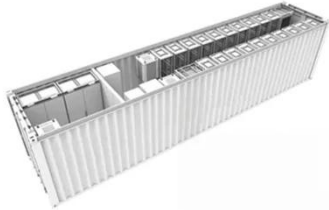
Overview

Here's what's shocking: A single square meter of solar panel can generate anywhere from 150 to 250 watts under ideal conditions. But "ideal" rarely exists in real life. Your roof's orientation, local climate, shading, and even the dust on your panels can slash that output. The answer lies in something most solar salespeople never properly explain— solar irradiance and your actual energy potential per square meter. But "ideal" rarely exists. Solar panels have become a cornerstone of renewable energy, but many wonder: How much power can a single square meter of solar panels actually produce?

Let's break down the science behind photovoltaic efficiency. As per the recent measurements done by NASA, the average intensity of solar energy that reaches the top atmosphere is about 1,360 watts per square meter. You can calculate the solar power per square meter with the following. This result indicates that each square meter of the area contributes approximately 6. By knowing W/m, you can: Install solar panels and maximize your energy output! What is Solar Panel Efficiency?

Solar panel efficiency measures how well a panel converts sunlight into.

How many watts of solar energy are there in 28 square meters



Solar Power per Square Meter Calculator

As per the recent measurements done by NASA, the average intensity of solar energy that reaches the top atmosphere is about 1,360 watts per square meter. You can calculate the solar ...

[Get Price](#)

Solar Energy Generation Per Square Metre: A Complete Guide

On a clear day, each square metre of the Earth's surface receives approximately 1,000 watts of solar energy, also known as 1 kW/m². This energy can be converted into electricity using ...

Sample Order
UL/KC/CB/UN38.3/UL



[Get Price](#)



Solar Energy Per Square Meter: How Much Power Can You Get?

This article explores solar energy per square meter and the various factors that influence energy output, such as location, climate, and panel efficiency. It provides crucial calculations, ...

[Get Price](#)

Solar Energy Calculator

Using the Solar Energy Calculator, you can estimate the energy potential of your solar setup and make informed decisions about adopting this renewable energy solution.

[Get Price](#)



Solar Power Per Square Meter Calculator

Calculate solar panel energy output per square meter. Get accurate daily, monthly, and annual production estimates based on location, panel specs, and system losses.

[Get Price](#)

How many square meters is one watt of solar energy?

Solar irradiance, defined as the power per unit area received from the sun, plays a direct role in determining how many square meters are equivalent to one watt of energy.

[Get Price](#)



Solar Panel Output Per Square Meter

Discover how much electricity solar panels generate per square meter, explore efficiency factors, technology



comparisons, and future innovations in photovoltaic energy.

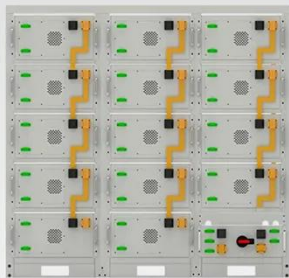
[Get Price](#)

Solar Power per Square Meter Calculator

Solar Energy Potential: On average, Earth's surface receives about 1,000 watts of solar power per square meter under direct sunlight. **Wind Turbines:** Modern wind turbines can produce up ...



[Get Price](#)



Battery String-S224

- 1C Charge/Discharge
- Easy configuration and maintenance
- Power supply can be single battery string or parallel battery strings

Solar Panel Watts Per Square Meter Explained

Learn how to measure solar panel efficiency using solar panel watts per square meter with this comprehensive guide.

[Get Price](#)

How many watts of solar energy are needed for 28 square meters

The average household will need a minimum of 3,500 kWh of electricity, so

you would need approximately 28 square meters of solar panels to meet that requirement, assuming you opt for solar ...

[Get Price](#)



Contact Us

For catalog requests, pricing, or partnerships, please visit:
<https://www.pienaarshof.co.za>

