

PIENAAR ENERGY (PTY) LTD

How many acres does the photovoltaic energy storage power station cover



Overview

These sites need enough space to support the solar equipment necessary for its desired generating capacity- typically occupying around 3,200 acres and containing hundreds of thousands of solar panels. It takes roughly 6 to 8 acres to house the solar equipment and panel rows for a 1. Abstract—The rapid deployment of large numbers of utility-scale photovoltaic (PV) plants in the United States, combined with heightened expectations of future deployment, has raised concerns about land requirements and associated land-use impacts. 5 acres/GWh/yr for small 2-axis flat panel PV power plants. Across all solar technologies, the total area generation-weighted average is 3.5 acres/GWh/yr with 40% of. In a landmark accord, major solar developers, conservation groups, agricultural organizations, environmental and environmental justice groups, and tribal entities announced today their agreement to advance large-scale U. solar development while championing land conservation and supporting local. Generally speaking, for every megawatt (MW) of solar power you aim to generate, you'll need anywhere from 5-10 acres of land. Generally, these facilities may cover anywhere from 10 to 100 acres, depending.

How many acres does the photovoltaic energy storage power station



Solar Farm Land Requirements (2023)

These sites need enough space to support the solar equipment necessary for its desired generating capacity- typically occupying around 3,200 acres and containing hundreds of thousands of solar ...

[Get Price](#)

Land-Use Requirements for Solar Power Plants in the United ...

On a capacity basis, the total-area capacity-weighted average for all solar power plants is 8.9 acres/MWac, with 22% of plants within 8 and 10 acres/MWac. For direct land-use requirements, the ...



[Get Price](#)

How Much Land For 1 Mw Solar Farm: A Quick Guide

Traditionally, you'd expect a 1 MW solar farm to gobble up 5-10 acres of land. But now, with technological advancements, we're seeing those numbers shrink. This is crucial because less ...

[Get Price](#)

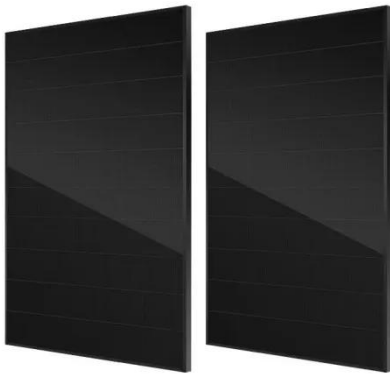


Land Requirements for Utility-Scale PV: An Empirical Update on ...

When combined with plant metadata, these polygon areas allow us to calculate power (MW/acre) and energy (MWh/acre) density for each plant in the sample, and to analyze density trends over time, by

...

[Get Price](#)



Land Use & Solar Development - SEIA

A utility-scale solar power plant may require between 5 and 7 acres per megawatt (MW) of generating capacity. Like fossil fuel power plants, solar plant development requires some grading of land and ...

[Get Price](#)

How Much Space Does A Solar Power Plant Take Up?

A rough estimate for the land area needed for a solar farm is about 4 to 6 acres per MW of installed capacity. A 5 MW solar farm would require approximately 20 to 30 acres (8 to 12 ...

[Get Price](#)



How many acres does the shared energy storage power



station ...

A typical large-scale BESS can occupy approximately 10 to 20 acres for a capacity of 20-100 MW. This compact footprint is largely due to advancements in battery technology that have ...

[Get Price](#)

Largest Solar Power Stations in USA , Photovoltaic Parks in USA , PV ...

The 617 MW solar farm covers around 6,350 acres of land, consisting of 3,500 acres of developed land and 2,000 acres of preserved land. Gradually commissioned since February 2013. Reached final ...

[Get Price](#)



Contact Us

For catalog requests, pricing, or partnerships, please visit:
<https://www.pienaarshof.co.za>

