

PIENAAR ENERGY (PTY) LTD

How long and wide is a 255w photovoltaic panel



Overview

25 feet or 65 inches b 39 inches. Portable solar panels are smaller, often half the size of regular solar arrays. The average solar panel is 5. Example: 5kW solar system is comprised of. Typical 255W solar panels measure approximately: "A 255W panel occupies about the same space as a medium-sized sofa cushion, making it ideal for space-constrained installations. " - Solar Installation Handbook 2023 Most models weigh between 35-42 lbs (16-19 kg), allowing single-person handling. Panel "Size" vs Physical Dimensions: The most critical distinction for homeowners is that solar panel "size" refers to electrical output (measured in watts), not physical measurements. A 400W panel has the same physical footprint whether it produces 350W or 450W – the difference lies in cell. Solar panel sizes and wattage range from 250W to 450W, taking up 1. Plus-Sorting guarantees highest system efficiency.

How long and wide is a 255w photovoltaic panel



Standard Solar Panel Sizes And Wattages (100W-500W Dimensions)

Whenever you want to find out what the standard solar panel sizes and wattages are, you encounter a big problem: There is no standardized chart that will tell you, for example, "A typical 300-watt solar panel is this ...

[Get Price](#)

standard solar photovoltaic panel sizes explained

The standard residential solar photovoltaic panel size you'll see most often is based on a 60-cell configuration, typically measuring about 67 inches long by 40 inches wide. This size offers the best balance ...



[Get Price](#)



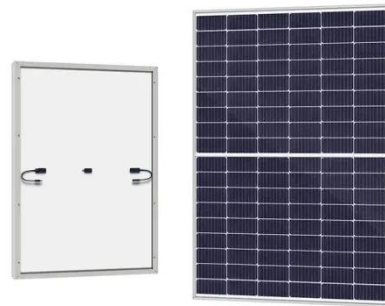
Understanding Solar Panel Dimensions In 2025: A Complete Size Guide

Explore the most common solar panel dimensions in 2025, including residential and commercial sizes. Learn how solar panel size dimensions affect power, installation, and efficiency.

[Get Price](#)

Guide to Solar Panel Sizes & Dimensions (October 2025)

Solar panel sizes and wattage range from 250W to 450W, taking up 1.6 to 2 square metres per panel. One of the most important things to consider when getting solar panels for your home is the specific ...



[Get Price](#)



Solar Panel Size Guide (with 4 Charts)

If you install a 6 kilowatt solar panel, you'll require 20 cells. If they are average sized cells, the system will be 13 feet long and 27 feet wide, or 352 square ft.

[Get Price](#)

How Big Is a 255 Watt Solar Panel? Dimensions, Applications

Wondering about the physical size of a 255-watt solar panel? Whether you're planning a rooftop installation or designing an off-grid system, understanding panel dimensions is crucial.

[Get Price](#)



How Big is a Solar Panel? The Solar Panel Size Guide



For a residential solar panel, size is fairly consistent across manufacturers: 65 inches (1.65 meters) by 39 inches (1 meter) is the average solar panel size that you find on the roofs of houses. That is about 5.4 feet ...

[Get Price](#)

The Ultimate Guide to Solar Panel Dimensions and Sizes

For example, a typical home solar panel may be around 1.7 meters long and 1 meter wide. The size of a solar panel directly connects to its wattage. Larger panels usually have more solar cells, which ...

[Get Price](#)



SolarWorld Sunmodule solar panel 255 watt mono data sheet

SolarWorld only delivers modules that have greater than or equal to the nameplate rated power. 25 years, a significant added value compared to the two-phase warranties common in the industry. In addition, ...

[Get Price](#)

Solar Panel Size & Dimensions Guide 2025 , Complete Specs

A standard residential solar panel measures 65-66 inches long by 39-40 inches wide by 1.5-2.0 inches thick, covering approximately 17.5-18.3 square feet. These 60-cell panels weigh 40-46 pounds and ...

[Get Price](#)



Contact Us

For catalog requests, pricing, or partnerships, please visit:
<https://www.pienaarshof.co.za>

