

## PIENAAR ENERGY (PTY) LTD

# How big are the 52 photovoltaic panels



## Overview

---

On average, 60 cell solar panels are 65 inches (1.65m) long, 40 inches (1m) wide, and about 1. Example: 5kW solar system is comprised of 50 100-watt solar panels. Can you put a 5kW solar system on your roof?

For that, you will need to know what size is a typical 100-watt solar panel, right?

To bridge that gap of very useful knowledge needed. What is the standard size of a solar panel?

The most common residential solar panel measures approximately 65" × 39" × 1. This size offers the best balance between power output, handling ease, and fitting standard roof dimensions.

## How big are the 52 photovoltaic panels

---

### HEAT DISSIPATION

Cold aisle containment,  
making optimal refrigeration effect;



## How Big Is A Solar Panel? A Guide To The Different

In general, the length of residential solar panels is usually between 65 inches (1.65m) and 79 inches (2m), their width is between 39 and 41 inches (around 1m). The area of a residential solar ...

[Get Price](#)

---

## Standard Solar Panel Sizes And Wattages (100W-500W Dimensions)

The goal here is to get to the average solar panel size by wattage. You can find typical dimensions of 100W, 150W, 170W, 200W, 200W, 220W, 300W, 350W, 400W, and 500W solar panels summarized ...



[Get Price](#)

---



## Understanding Solar Panel Dimensions In 2025: A Complete Size Guide

Explore the most common solar panel dimensions in 2025, including residential and commercial sizes. Learn how solar panel size dimensions affect power, installation, and efficiency.

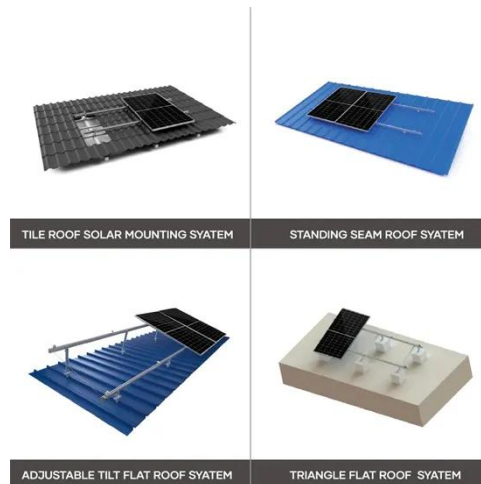
[Get Price](#)

---

## What Are the Common Solar Panel Sizes?

Our guide on solar panel sizes covers standard dimensions, along with their power output and ideal applications.

[Get Price](#)



## The Ultimate Guide to Solar Panel Size, Weight & Wattage (2025)

Standard residential solar panels are typically around 5.8 feet long by 3.5 feet wide and weigh between 40 to 50 pounds. However, the exact dimensions depend heavily on the panel's ...

[Get Price](#)

## How big is the area of 52 photovoltaic panels

Guide to Solar Panel Sizes & Dimensions (November Solar cell dimensions are typically around 189 x 100 x 3.99cm (6.2 x 3.28 x 0.13 feet), while solar panel dimensions are usually between 1.6m<sup>2</sup> to ...

[Get Price](#)



## Solar Panel Size & Dimensions Guide 2025 , Complete Specs



In this comprehensive guide, you'll learn everything you need to know about solar panel sizing, from standard dimensions to weight considerations, helping you determine the perfect solar ...

[Get Price](#)

---

## Solar Panel Size Guide (with 4 Charts)

Standard solar panels weigh 35 to 60 lbs. The panels' weight is influenced by the materials used for construction. Portable solar panels weigh from 10 to 30 lbs. The 5 watt panels are the lightest at 2 to ...

[Get Price](#)



---

## standard solar photovoltaic panel sizes explained

What is the most common residential solar photovoltaic panel size I will encounter? The standard residential solar photovoltaic panel size you'll see most often is based on a 60-cell ...

[Get Price](#)

---

## Understanding Solar Panel Sizes: A Homeowner's Guide

Typical Dimensions: About 5.4 feet by 3.25 feet (or 65 inches by 39 inches).

Average Weight: Approximately 40-50 pounds. Their smaller size and lighter weight make them easier to ...

[Get Price](#)



---

## Contact Us

For catalog requests, pricing, or partnerships, please visit:  
<https://www.pienaarshof.co.za>

