

PIENAAR ENERGY (PTY) LTD

How big a solar container lithium battery is suitable for connecting to an inverter



How big a solar container lithium battery is suitable for connecting



Battery and Inverter Sizing Guide 2025: How to Match Solar Storage

Learn how to size and pair a battery with your solar inverter in 2025. Discover key ratios, examples, and Growatt solutions for optimal solar + storage system design.

[Get Price](#)

How Big a Battery for Your Solar System? Essential Sizing Tips and

Most lithium batteries allow a DoD of around 80-90%, while lead-acid batteries typically allow only 50%. Users should consult the manufacturer's specifications and adjust the battery size ...



[Get Price](#)



Guide to Solar Battery Sizing

Calculating your solar battery bank size is a blend of science and strategy. By factoring in daily energy consumption, days of autonomy, depth of discharge, and efficiency losses, you can ...

[Get Price](#)

Calculate Battery Size For Any Size Inverter (Using Our Calculator)

Inverter Battery Size Calculator
How to Calculate Battery Capacity For Inverter
How Many Batteries For 3000-Watt Inverter
Battery Size Chart For Inverter
Battery to Inverter Wire Size Chart
To calculate the battery capacity for your inverter use this formula
$$\text{Inverter capacity (W)} \times \text{Runtime (hrs)} / \text{solar system voltage} = \text{Battery Size} \times 1.15$$

Multiply the result by 2 for lead-acid type battery, for lithium battery type it would stay the same
Example Let's suppose you have a 3000-watt inverter with an 85% efficiency rate and your daily runtime
See more on [dotwatts solartown](#)



IP65/IP55 OUTDOOR CABINET

IP54/55

OUTDOOR ENERGY STORAGE CABINET

OUTDOOR BATTERY CABINET

Choosing and Sizing Batteries, Charge Controllers and Inverters for

To determine the inverter size we must find the peak load or maximum wattage of your home. This is found by adding up the wattage of the appliances and devices that could be run at the same time. ...

[Get Price](#)

Determining the Solar and Inverter Size Needed to Charge a Battery

When planning an off-grid or backup



power system, one of the first questions people ask is: How do I determine the right Size of solar and inverter system needed to charge a battery ...

[Get Price](#)

Lithium Ion Solar Battery Sizing: Accurate kWh and kW

What Data Do You Need to Size a Lithium Ion Solar Battery? A solid result starts with the right inputs. Capture them once, then reuse for every check. These numbers anchor every step that ...



[Get Price](#)



Choosing and Sizing Batteries, Charge Controllers and Inverters for

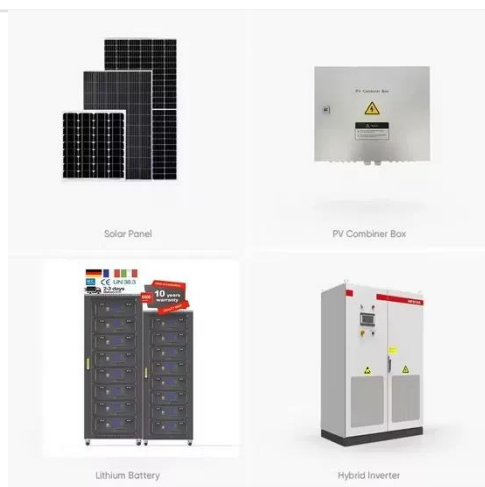
To determine the inverter size we must find the peak load or maximum wattage of your home. This is found by adding up the wattage of the appliances and devices that could be run at the same time. ...

[Get Price](#)

Battery Size For Solar Systems: How To Choose Right

Learn how to calculate the right battery size for solar systems using energy needs, DoD, and real-world examples.

[Get Price](#)



How to match lithium battery with solar container inverter

When it comes to lithium batteries, I recommend sticking to a maximum of 1000W, while for lead-acid batteries, aiming for around 200W per 100Ah battery is ideal.

[Get Price](#)

Solar Inverter & Battery Sizing Calculator

LuxpowerTek solar inverter and battery Sizing Calculator are simple and easy to understand. All you need to do is enter the information about your setup. Later, the tool will provide ...

[Get Price](#)



Calculate Battery Size For Any Size Inverter (Using Our Calculator)

To recharge your battery from time to

time you would need the right size solar panel to do the job! Read the below article to find out the suitable solar panel size for your battery bank

[Get Price](#)



Contact Us

For catalog requests, pricing, or partnerships, please visit:
<https://www.pienaarshof.co.za>

