

PIENAAR ENERGY (PTY) LTD

Generator fuel-wind ratio



Overview

It is the ratio of a fleet's actual generation to its maximum potential generation. In the past, EIA published annual capacity factors for only a few fuel types, and several renewable fuel types were aggregated. Capacity factors are an important measure of electric generator usage, running full time, when the primary utility power source fails. Load Percentage Impact Generator fuel consumption is directly related to the electrical load: 2.

Generator fuel-wind ratio



Generator Fuel Consumption Calculator

Use our generator fuel consumption calculator to estimate fuel usage for portable and standby generators.

[Get Price](#)

Gas Generator Set PERFORMANCE CHARACTERISTICS


gher compression ratios typically above 10:1. The electronic Air Fuel Ratio Control (AFRC) system optimizes fuel consumption thus providing generator set electrical efficiencies above 35% for ...

[Get Price](#)

Lower cost larger system

Verified Supplier

20Kwh
30Kwh



Five yellow stars



Generator fuel consumption calculator

Wondering how much fuel you can save in your operation? Fill in your parameters and find out!

[Get Price](#)

Wind Power: Capacity Factor & Intermittency

Wind power plants have a much lower capacity factor but a much higher efficiency than typical fossil fuel plants. A higher capacity factor is not an indicator of higher efficiency or vice versa.



[Get Price](#)



Understanding energy capacity and capacity factor

The capacity factor for renewable resources such as a utility-scale wind or solar facility is significantly less than a baseload nuclear, coal or natural gas plant due to the variability of the wind ...

[Get Price](#)

Monthly generator capacity factor data now available by fuel and

Capacity factors describe how intensively a fleet of generators is run. A capacity factor near 100% means a fleet is operating nearly all of the time. It is the ratio of a fleet's actual generation ...



[Get Price](#)

How much electricity various fuels actually produce

The low capacity factors of wind and



solar generation mean that in practice, it takes many more generators of a given output rating to produce the same amount of energy as a dispatchable ...

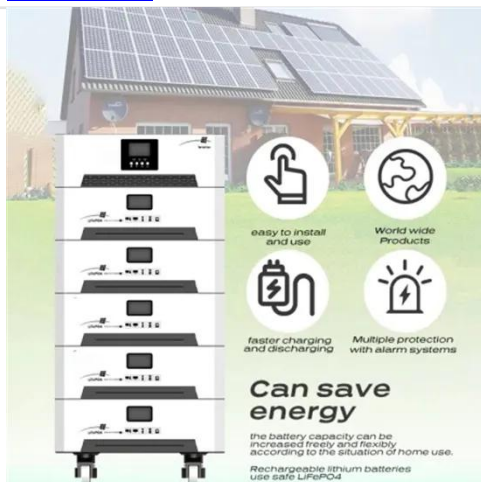
[Get Price](#)

Microsoft Word

"Capacity factor", or net capacity, is the appropriate term to inform policy discussions as it is the ratio between what a generator is capable of generating at maximum output versus the unit's actual output ...



[Get Price](#)



Understanding Capacity Factors for Renewable Sources & Fossil ...

To better understand the cause of these potential shortfalls, it is necessary to understand the capacity factors of different energy sources, including renewables like solar and wind, as ...

[Get Price](#)

Diesel Generator Fuel Consumption Chart - Walt Power

The table below provides estimates of fuel consumption based on the generator size and load levels, giving you a clearer picture of how much fuel you might need for your specific application.

[Get Price](#)



Contact Us

For catalog requests, pricing, or partnerships, please visit:
<https://www.pienaarshof.co.za>

