

PIENAAR ENERGY (PTY) LTD

Fiji s largest communication base station wind power



Fiji s largest communication base station wind power



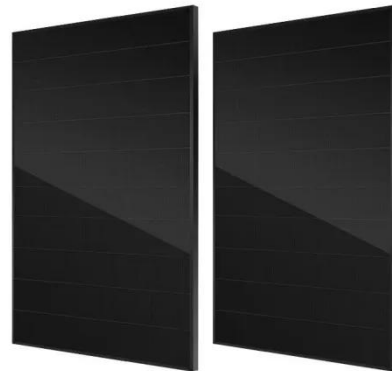
An analysis of the 10 MW Butoni wind farm in the Tropical ...

The results revealed that the mean wind speed, power density and the AEP at the Butoni wind farm are below the utility-scale standard of 6.4 m/s, 300 W/m² and 500 MWh/ year/turbine respectively, at 55 ...

[Get Price](#)

Modelling wind for Fiji's green future , New Zealand eScience

At the moment wind energy makes up only 0.25 percent of Fiji's energy production, with over half the country's power running on hydropower. While hydropower is renewable, around 41% of the country ...



[Get Price](#)

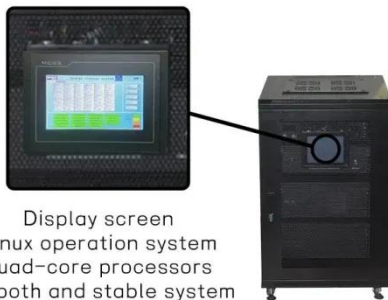
Antenna supplied to fiji , Product News , Maser

In the tropical paradise of Fiji, Ericsson, our Australian Maser team, and a top Fijian communication service provider (CSP) have teamed up to install 700 mid-band passive antennas across more than ...

[Get Price](#)

Fiji's Wind Energy Future: Key Lessons and Why Wind Is a

Fiji's strongest wind resources lie offshore, notably in the Bligh Waters, where wind speeds average around 8.5 m/s. Combined with modern turbine technology capable of energy ...

[Get Price](#)

Display screen
Linux operation system
quad-core processors
smooth and stable system

Fiji Power Plants

List of power plants in Fiji from OpenStreetMap

[Get Price](#)

Wind resource assessment and energy potential of selected locations ...

Abstract This study summarizes an assessment of the wind resource at

selected locations in Fiji for the potential of future utility-scale wind-power development. We use 2-8 years of near

...

[Get Price](#)



Mobile network rollout in Fiji with antennas

In the tropical paradise of Fiji, Ericsson, its Australian partner Maser, and a top Fijian communication service provider (CSP) have teamed up to install 700 mid-band passive antennas ...

[Get Price](#)

Fiji s largest communication base station wind power

The Butoni wind farm is operated by the Fiji Electricity Authority (FEA), and feeds directly into the grid for Viti Levu, which has a total capacity of about 140MW, and is operated by the FEA.

[Get Price](#)



Wind , energy_website

With the conclusion of this assessment work, we do hope that we will be able to ascertain the good potential wind regimes in Fiji. In view of the above, the



following is a list of requirements that would ...

[Get Price](#)

Energy Storage Equipment, Energy storage solutions, Lithium battery

The solution adopts new energy (wind and diesel energy storage) technology to provide a reliable guarantee for the stable operation of communication base stations.

[Get Price](#)



Contact Us

For catalog requests, pricing, or partnerships, please visit:
<https://www.pienaarshof.co.za>

