

**PIENAAR ENERGY (PTY) LTD**

# **European Outdoor Cabinet IP65ODM**



## European Outdoor Cabinet IP65ODM

---



### Masterlan outdoor cabinet 19" 6U/410mm, assembled, IP65

Outdoor cabinet Masterlan - size 6U, depth 410mm. The cabinet is made of 1mm aluminum sheet, powder coated RAL7032 (gray), the door is equipped with a pair of locks.

[Get Price](#)

---

### 26U 19" IP65 Outdoor Cabinet W600mm D800mm

The IP65 Outdoor Cabinet is a high-quality cabinet designed for 19" industrial applications. Based on EN60529 provided IP65 protection class against dust and water ingress. Welded construction for ...



[Get Price](#)

---



### IP65 Outdoor Server Cabinet Enclosure, 32U, 600mm Wide x ...

AZE's 32U NEMA 4/4X waterproof Outdoor Server Cabinet are designed to protect your sensitive network equipment from harsh environments, with waterproof and dustproof features to safeguard it ...

[Get Price](#)

---

## 19" IP65 Outdoor Cabinet Width: 600 mm Depth: 650 mm

Width: 600 mm Depth: 650 mm \* The cabinet has a mounting plate equipped with a factory installed DIN rail, position of DIN rail can be changed. The mounting plate can be installed outside and finally can ...



[Get Price](#)



## IP65 Outdoor Electric Cabinet

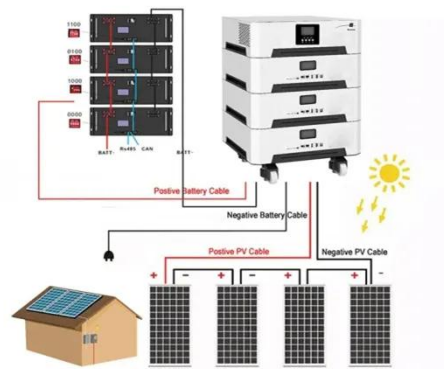
Discover IP65 outdoor electric cabinets with waterproof protection, ideal for outdoor outlet enclosures. CE certified, metal construction for durable performance.

[Get Price](#)

## Outdoor energy storage cabinets in Europe - Mingway Metal

Outdoor energy storage cabinets are transforming how Europe harnesses and uses energy, with adoption spanning three key sectors: - Residential Solar Integration: In Germany, ...

[Get Price](#)



## 19" IP65 Outdoor Cabinets

The cabinet is equipped with hinged canopy roof which also has a hinged



mechanism keeps canopy open during installation and maintenance period. The canopy is gasketed for EN ...

[Get Price](#)

---

## Contact Us

---

For catalog requests, pricing, or partnerships, please visit:  
<https://www.pienaarshof.co.za>

