

PIENAAR ENERGY (PTY) LTD

Energy storage rotating device



Energy storage rotating device



Flywheel Energy Storage Systems (FESS)

Flywheel energy storage systems (FESS) employ kinetic energy stored in a rotating mass with very low frictional losses. Electric energy input accelerates the mass to speed via an integrated motor ...

[Get Price](#)

The \$200 Million Spinning Wheel Revolution: How Torus is

This is precisely where Torus identified an opportunity to revolutionize energy storage using principles that predate the electrical grid by centuries.



[Get Price](#)



New Energy Storage System Links Flywheels And Batteries

Nevertheless, flywheels have performed common energy storage and control tasks throughout human history in a continuous line of record back to 6,000 BC, from potter's wheels on up ...

[Get Price](#)

What is a Rotating Energy Storage Chip? , NenPower

It utilizes high-speed rotation to store energy in a manner that minimizes energy loss, presenting a superior alternative to traditional energy storage systems, such as batteries and flywheels.

[Get Price](#)



Flywheel Energy Storage

Flywheel energy storage or FES is a storage device which stores/maintains kinetic energy through a rotor/flywheel rotation. Flywheel technology has two approaches, i.e. kinetic energy (rotational ...

[Get Price](#)

The Flywheel Energy Storage Method: Where Ancient Physics Meets ...

Imagine a giant, high-tech version of your childhood spinning top - that's essentially flywheel energy storage in a nutshell. This mechanical battery (who needs chemicals anyway?) ...

[Get Price](#)



The most complete analysis of flywheel energy storage for new energy



It uses a high-speed rotating flywheel to store energy in the form of kinetic energy. When energy is urgently lacking or needed, the flywheel slows down and releases the stored energy.

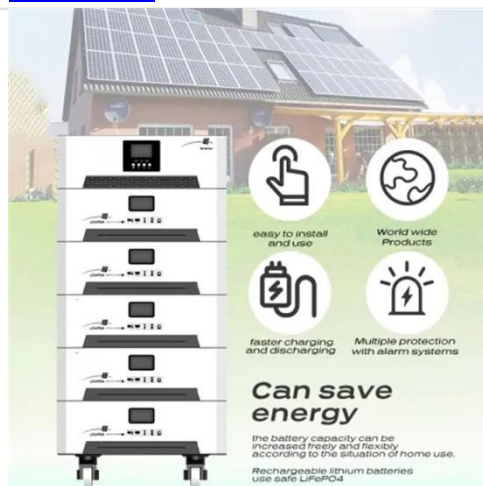
[Get Price](#)

Flywheel Energy Storage System: What Is It and How Does It ...

What Is a Flywheel Energy Storage System? A flywheel energy storage system is a mechanical device used to store energy through rotational motion. When excess electricity is available, it is used to ...



[Get Price](#)



Flywheel energy storage

Flywheel energy storage (FES) works by spinning a rotor (flywheel) and maintaining the energy in the system as rotational energy.

[Get Price](#)

Flywheel Energy Storage: A Comprehensive Guide

Flywheel energy storage (FES) is a

kinetic energy storage technology that utilizes a rotating flywheel to store energy. The flywheel is connected to an electrical machine that acts as a ...

[Get Price](#)



Contact Us

For catalog requests, pricing, or partnerships, please visit:
<https://www.pienaarshof.co.za>

