

PIENAAR ENERGY (PTY) LTD

Double-glass photovoltaic panel size specifications



Overview

Available in range a transparencies, opaque to 80% light transmission. Standard panel dimension 1200mm x 600mm x 7. Full range of colour laminates or coatings available on request. Efficiency from 12% or 118Wp/m². Unlike regular solar panels that have a plastic backsheet, double glass panels sandwich solar cells between two layers of tempered glass. To buy or for help. Glass-glass solar modules (bifacial modules) increase energy production by approximately 2% to 5% compared to traditional glass-backsheet modules, thanks to their ability to capture light from both sides. But what exactly sets them apart?

What are double glass solar modules?

Traditional solar panels typically feature a glass front and a polymer backsheet. In contrast, double glass.

Double-glass photovoltaic panel size specifications



Double glass solar module , Maysun Solar

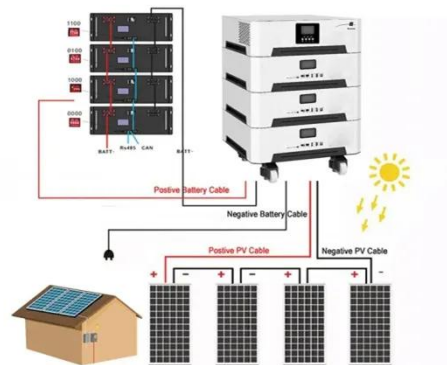
Double glass modules use an innovative design with glass on both sides, offering higher photovoltaic conversion efficiency and better environmental characteristics.

[Get Price](#)

What is the Double Glass (Dual Glass) Photovoltaic Solar Panel?

Most common configuration for Bifacial Solar Panels is double glass. And even when bifacial modules have not have Fire Class A, still is much more protect anti-fire than standard back ...

[Get Price](#)



Double Glass Solar Panel Thickness Guide: Find Your Perfect Match

Compare double glass solar panel thickness configurations for international projects. Includes custom small-format options under 200W for specialized global applications.

[Get Price](#)

Specifications and Models of Photovoltaic Glass Panels: A ...

Summary: Photovoltaic (PV) glass panels are transforming renewable energy systems by merging solar efficiency with architectural versatility. This guide explores key specifications, popular models, ...



[Get Price](#)



Product Specifications and Datasheets

Standard panel dimension 1200mm x 600mm x 7.1mm, but available in any bespoke shape and size up to 3m. Full range of colour laminates or coatings available on request.

[Get Price](#)

Glass-Glass vs Mono-Glass Solar Panels: Solving Your Solar Panel

Need help choosing between mono-glass ABC solar panels and double-glass panels? Compare weight, power output, fire ratings, and costs. Find which design fits your projects.



[Get Price](#)

Solar Panel Glass Specifications Explained



When selecting PV glass for solar panels, several key specifications need to be considered to ensure optimal performance and compatibility with project requirements.

[Get Price](#)

Specifications of double-glass photovoltaic panels

The thickness of the front glass generally used for this type of structure is 3.2 mm. Dual-glass type modules (also called double glass or glass-glass) are made up of two glass surfaces, on the front ...



[Get Price](#)



Double the strengths, double the benefits

In the ever-evolving world of photovoltaic technology, double glass solar modules are emerging as a game-changer. By encapsulating solar cells between two layers of glass, these ...

[Get Price](#)

Photovoltaic Glass Specifications and Dimensions: A ...

This guide explores photovoltaic glass

specifications and dimensions, helping architects, construction professionals, and solar energy developers make informed decisions.

[Get Price](#)



Contact Us

For catalog requests, pricing, or partnerships, please visit:
<https://www.pienaarshof.co.za>

