

PIENAAR ENERGY (PTY) LTD

Does the lithium iron phosphate battery have a cylindrical shape



Does the lithium iron phosphate battery have a cylindrical shape



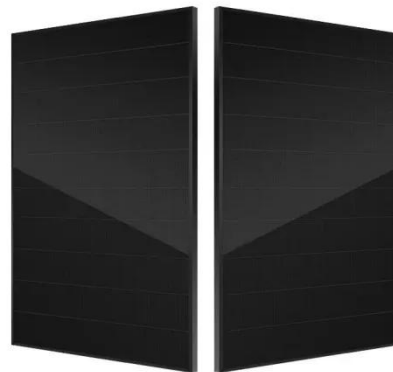
Cylindrical vs Prismatic LiFePO4 Battery Cells

Lithium Iron Phosphate (LiFePO4) batteries are increasingly popular across various industries, from electric vehicles to renewable energy storage. Among the different formats of ...

[Get Price](#)

[Complete guidance] types of lifepo4 battery cells, prismatic vs.

When it comes to choosing the right battery for your electronic devices, LiFePO4 battery cells are an excellent option. These batteries, also called lithium iron phosphate batteries, are known ...



[Get Price](#)



LiFePO4 Battery Cell: Prismatic vs Pouch vs Cylindrical Lithium

...

A LiFePO4 cylindrical lithium-ion battery is a type of rechargeable battery that features a cylindrical shape and uses Lithium Iron Phosphate (LiFePO4) as the cathode material.

[Get Price](#)

Types Of Lithium Lifepo4 Battery Cell

Cylindrical lithium phosphate cells are characterized by their tubular shape, resembling traditional AA or AAA batteries. They are known for their robust structure, which makes them a good choice for ...



[Get Price](#)



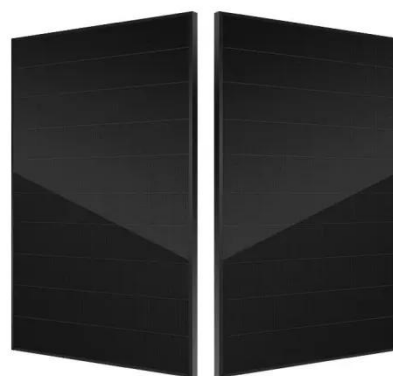
[LiFePO4 Battery Types] Cylindrical vs. Prismatic vs. Pouch

LiFePO4 batteries, or lithium iron phosphate batteries, are increasingly recognized for their remarkable safety, longevity, and versatility. Their unique chemistry and design make them a ...

[Get Price](#)

Lithium Iron Phosphate (LiFePO4) Cylindrical Cells

Lithium Iron Phosphate Cylindrical Cells Cylindrical cells one of the most widely used lithium ion battery shapes due to ease to use and good mechanical stability. The tubular cylindrical ...



[Get Price](#)

Prismatic vs Cylindrical LiFePO4 Cells in ESS , NAZ Solar Electric



Date Published: FebruLiFePO4 Cell Theory, Prismatic vs Cylindrical Cells
Lithium Iron Phosphate (LiFePO4) batteries have become increasingly popular for residential and commercial ...

[Get Price](#)

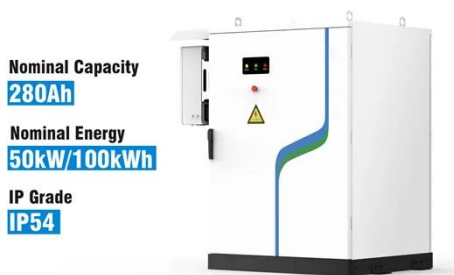
Types of LiFePO4 Battery Cells: Cylindrical, Prismatic, and Pouch

Lithium iron phosphate (LiFePO4) batteries are known for their high safety, long cycle life, and excellent thermal stability. They come in three main cell types: cylindrical, prismatic, and pouch.

...



[Get Price](#)



What is Cylindrical Lithium Iron Phosphate Battery? Uses

A Cylindrical Lithium Iron Phosphate battery is a type of lithium-ion battery characterized by its cylindrical shape, typically with dimensions like 18650 or 26650.

[Get Price](#)

Contact Us

For catalog requests, pricing, or partnerships, please visit:
<https://www.pienaarshof.co.za>

