

PIENAAR ENERGY (PTY) LTD

Does the Moscow communication base station EMS have a bridge



Overview

Transport notification does not require the facility to be an approved base station facility, nor does a base station physician need to receive the information. Base stations are one of the widely used components in the field of wireless communication and networks. It is an access point or base point of a. usually UHF, VHF, or 700- to 800-MHz systems that allow for dispatch base-to-vehicle (mobile and portable radios), vehicle- to-vehicle, vehicle-to-medical facility, and medical facility-to-medical facility communications. Mobile radios (transmitter/receivers) are vehicle-mounted devices used to. At present, this is one of the largest teleports in Russia which provides various broadcast satellite and digital services making a significant contribution to the development of different economic sectors. The SCC Bear Lakes ground infrastructure includes sixteen receiving and transmitting. by a cross-cutting reliance on the electromagnetic spectrum. EMS enables our warfighters to use critical technologies such as ra ar, navigation, connected weapons and sensors, and much more. At the end of October 2023, it became known that Moscow management companies (MC) are increasing prices for the placement of networks in apartment buildings. In some cases, an almost sevenfold increase in value is recorded.

Does the Moscow communication base station EMS have a bridge



Communications-EMT -- Hopper Institute®

A base station is a radio operated from a fixed site such as a dispatch center, hospital, or some other location. It usually runs off community electrical power and transmits at much higher power than smaller, portable radios.

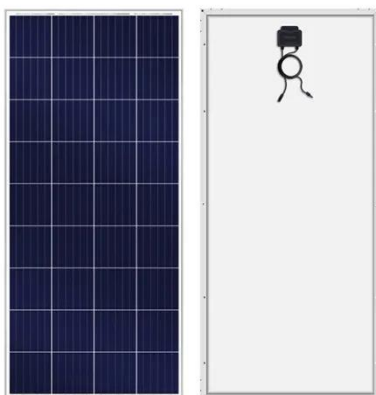
[Get Price](#)

General Order Section 01

All Maryland hospital emergency departments have EMRC communications. If the approved base station hospital and receiving hospital are not the same, both hospitals must be included in the communication for a ...



[Get Price](#)



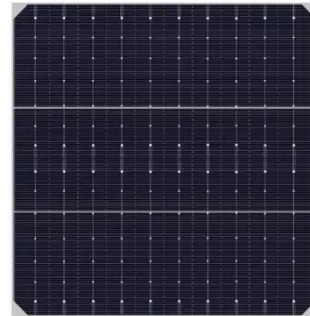
Russia > Priyom

While the HF radio networks of each Russian military branch are nominally separate, they follow common sets of rules described on the following pages. The HF radio presence of the Russian ...

[Get Price](#)

Russia > Priyom

General Information Russian Ground Forces Russian Air Force Russian Navy The HF radio presence of the Russian Ground Forces consists of many interconnected subnetworks, and it's not possible to cover them all adequately. The call signs are made of either a word and 2 digits (in voice only), or a 4-character combination of letters and sometimes digits. A call sign may refer to either a single unit, or a group of units. It should See more on priyom tadviser



Communication in Moscow - TAdviser

Also in Moscow, architectural criteria for the placement of mobile communication equipment have been developed. They will be applied to antenna feeder devices, communication base stations, radio relay ...

[Get Price](#)



Electromagnetic Spectrum Enterprise Capabilities and Services

DSO anticipates, understands and solves multidimensional EMS access challenges so that DoD continues to be the most lethal fighting force across all warfighting domains.

[Get Price](#)

.01 Scope. .02 Base Stations in General.

Physicians not authorized to practice in Maryland must have a dual consult with a Maryland base station in order to have a Maryland licensed physician give the orders to Maryland EMS providers.

[Get Price](#)



Communication in Moscow

Also in Moscow, architectural criteria for the placement of mobile communication equipment have been developed. They will be applied to antenna feeder devices, communication base stations, radio relay ...

[Get Price](#)

Satellite Communications Center Bear Lakes turns 25

They work in backup mode and, thus, secure a reliable broadband connection between Moscow and the SCC which makes it possible for the SCC to connect to any signal source within Moscow and the Moscow region.

[Get Price](#)

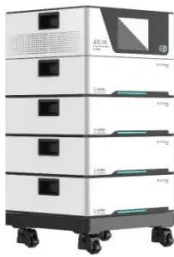


Chapter 5: Communication Flashcards , Quizlet

Portable, handheld transmitter/receivers are useful when you are out of your

vehicle or in the patient compartment and must stay in communication with the base, with one another, and with medical ...

[Get Price](#)



I have visited an old Russian "numbers station", the UVB-76

From your pictures (and other pictures I've seen), the base seems to be in an advanced state of decay, yet the I believe the location UVB76 was transmitting from only changed a few years ago.

[Get Price](#)



Kosovo Communication Base Station EMS Construction Unit

A GSM (Global System for Mobile Communications) base station, also known as a BTS (Base Transceiver Station), is a critical component in a GSM cellular network.

[Get Price](#)

Contact Us

For catalog requests, pricing, or partnerships, please visit:
<https://www.pienaarshof.co.za>

