

**PIENAAR ENERGY (PTY) LTD**

# **Conversion rate of solar panels**



## Conversion rate of solar panels

---



### What is Conversion Rate in Residential Solar? , Opulands

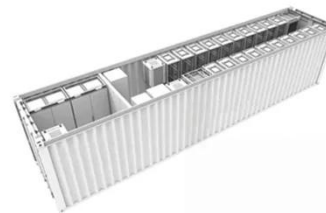
Conversion rate, also known as solar panel efficiency, is a measure of how effectively a solar panel can convert the energy from sunlight into electricity that can power a home.

[Get Price](#)

### Solar Performance and Efficiency

Factors Affecting Conversion Efficiency  
 Determining Conversion Efficiency  
 Additional Information  
 Not all of the sunlight that reaches a PV cell is converted into electricity. In fact, most of it is lost. Multiple factors in solar cell design play roles in limiting a cell's ability to convert the sunlight it receives. Designing with these factors in mind is how higher efficiencies can be achieved.

1. Wavelength--Light is composed of photons--or p See more on energy.govmonarch-power



### Understanding the Metrics Behind Solar Panel Efficiency Ratings

The key metrics of solar panel efficiency ratings include conversion efficiency, temperature coefficient, and power

output. Conversion efficiency measures the percentage of sunlight converted into usable ...

[Get Price](#)



## Solar Panel Efficiency: Understanding Conversion Rates

Solar panel efficiency refers to the percentage of sunlight energy hitting the panels that gets converted into electrical energy. For example, a solar panel with a 15% efficiency rating ...

[Get Price](#)

## Understanding Solar Panel Efficiency Ratings for Better Purchase ...

Energy conversion rates, a crucial aspect of solar panel performance, measure how effectively panels transform sunlight into usable electricity. Panels with higher conversion rates, ...



[Get Price](#)



## What is the conversion rate of solar photovoltaic panels?

In summary, the conversion rate of solar photovoltaic panels largely determines their effectiveness in transforming sunlight into usable electricity, and this rate typically falls between 15% ...

[Get Price](#)

## Energy Conversion Rates in Solar Panels - Spizeo

Energy conversion rates in solar panels vary greatly by type. Monocrystalline panels lead the pack, often exceeding 20% efficiency, making them ideal for space-constrained installations. Polycrystalline ...



[Get Price](#)

---



## What is the energy conversion rate of solar panels?

For example, if a solar panel has an energy conversion rate of 20%, it means that it can convert 20% of the sunlight that hits it into electrical energy. The remaining 80% is either reflected, absorbed as ...

[Get Price](#)

---

## The most efficient solar panels in 2026

Today, most panels are at least 20% efficient, but the best ones convert over 22% of the sun's energy into electricity. After reviewing hundreds of solar panel models, we found five brands ...

[Get Price](#)

---



## Solar Energy Conversion Rates: Maximizing Efficiency and Output



Solar energy conversion rates refer to the percentage of sunlight that is converted into usable electricity. The higher the conversion rate, the more efficient the solar panel is at producing ...

[Get Price](#)

## Understanding the Metrics Behind Solar Panel Efficiency Ratings

The key metrics of solar panel efficiency ratings include conversion efficiency, temperature coefficient, and power output. Conversion efficiency measures the percentage of sunlight converted into usable ...



[Get Price](#)



## Solar Performance and Efficiency

The conversion efficiency of a photovoltaic (PV) cell, or solar cell, is the percentage of the solar energy shining on a PV device that is converted into usable electricity.

[Get Price](#)

## Contact Us

For catalog requests, pricing, or partnerships, please visit:  
<https://www.pienaarshof.co.za>

