

PIENAAR ENERGY (PTY) LTD

Cannot place batteries in energy storage cabinet



✓ 100KWH/215KWH

✓ LIQUID/AIR COOLING

✓ IP54/IP55

✓ BATTERY 6000 CYCLES

Cannot place batteries in energy storage cabinet



What is the difference between "can not", "cannot", and "can't"?

The phrase "can not" may mean "cannot" or "can't," but it also may mean "able not to," which is much different than "not able to" as it conveys the ability to not do something rather than the ...

[Get Price](#)

grammaticality

Cannot is the only negative form that contains not rather than -n't. Theoretically, since it is a single word, you can say why cannot you without a problem. My theory is that modern English ...

[Get Price](#)



Guide to Battery Cabinets for Lithium-Ion Batteries: 6 Essential

This guide explores six key factors to consider when purchasing a battery cabinet for lithium-ion batteries. Whether you're looking for fire protection, safe charging options, or the ability to ...



[Get Price](#)

Essential Requirements for Placing Energy Storage Batteries: A No

The secret often lies in how and where you place those battery units. Whether you're setting up a home solar system or managing a commercial energy park, understanding placement ...



[Get Price](#)



What is another way of saying "we cannot guarantee"?

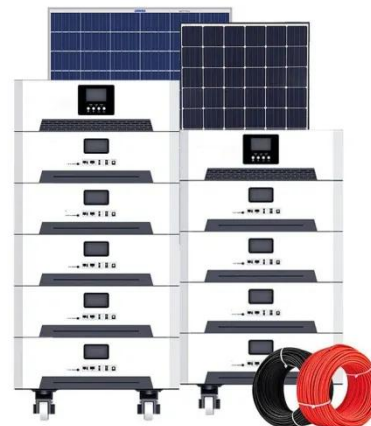
We therefore cannot offer any estimates as to how well it will perform. If you wish to modify the hardware configuration after having confirmed that it meets your original specification, ...

[Get Price](#)

conditional perfect

1 There is no correct way to use "cannot help but." There are two traditional and synonymous idioms, "cannot but [do something]" and "cannot help [doing something]." Those who ...

[Get Price](#)



The usage of "can not" vs. "cannot" in mathematics

So here it's about minimizing ambiguity:



can not permits two interpretations, while cannot permits only one. Such care is critical in the language of mathematics. As another example, West ...

[Get Price](#)

Cabinet Battery Integration Secrets You Need for Safety

You should always check for enough space and proper airflow. Keep at least three feet of separation between energy storage units unless you have tested the setup for safety. Make sure the area has ...



[Get Price](#)

Cannot vs. Can Not

So, "cannot" means something (denoted S) is impossible, while "can not" means the inverse of that something (denoted !S) is possible. These two statements do not imply each other. Of ...

[Get Price](#)



Battery Energy Storage Systems: Main Considerations for Safe

This webpage includes information from

first responder and industry guidance as well as background information on battery energy storage systems (challenges & fires), BESS installation ...

[Get Price](#)



If I am writing a formal letter, should I use "can't," "cannot," or

Stick with cannot. Can't tends to be informal, and can not is usually considered a typo.

[Get Price](#)

Maximize Safety and Space: The Essential Guide to Battery Storage ...

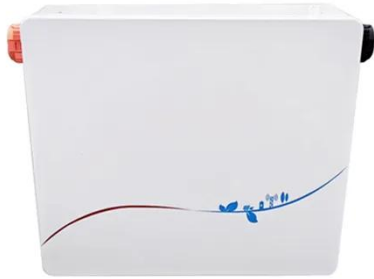
Battery storage cabinets are specialized containers designed to safely hold batteries. They mitigate risks associated with battery installation, such as leaks, overheating, and short circuits.

[Get Price](#)



NFPA 70E Battery and Battery Room Requirements , NFPA

Battery systems pose unique electrical safety hazards. The system's output may



be able to be placed into an electrically safe work condition (ESWC), however there is essentially no way to ...

[Get Price](#)

Best Practices and Considerations for Siting Battery Storage ...

o Since batteries are often used for resilience measures, it is critical that the battery storage system is protected from storm damage so the facility can rely on it during grid outages.



[Get Price](#)



Common Issues with Residential Energy Storage and How to Fix Them

In this blog, we'll explore the most common issues homeowners face with residential energy storage and offer practical solutions to keep your system running smoothly.

[Get Price](#)

Why is "cannot" spelled as one word?

Why is "cannot" spelled as one word whereas other similar constructions such as "do not," "will not," "shall not," "may not" and "must not" are spelled as two words (unless they are ...

[Get Price](#)



The Ultimate Guide to Safe Storage of Lithium Ion Batteries

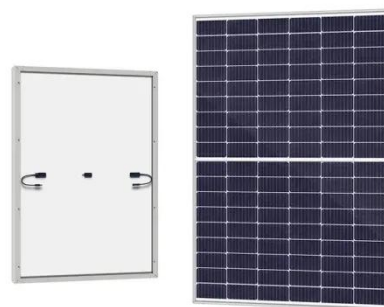
This comprehensive guide covers the critical risks associated with improper storage, outlines modern storage solutions, and helps you understand the features of a secure lithium battery ...

[Get Price](#)

Battery Cabinet Solutions: Ensuring Safe Storage and Charging for

To address these concerns, the battery cabinet has become a critical safety solution. A lithium-ion battery charging cabinet provides both fire-resistant storage and controlled charging ...

[Get Price](#)

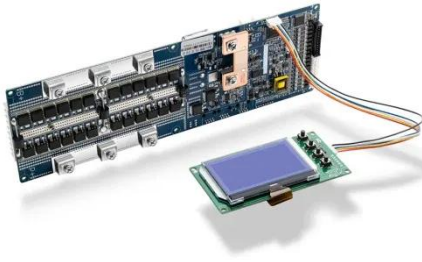


double negation

9 "cannot not say" would only rarely be

used in English, and only in very specific circumstances. In particular, this is not a simple double negative. "cannot not" does not mean the same as "can", it ...

[Get Price](#)



Contact Us

For catalog requests, pricing, or partnerships, please visit:
<https://www.pienaarshof.co.za>

