

PIENAAR ENERGY (PTY) LTD

Brunei Communication Base Station Battery Installation Regulations



Overview

In exercise of the powers conferred by section 26 of the Telecommunications Order, 2001, the Authority for Info-communications Technology Industry of Brunei Darussalam (“Authority”) hereby issues the following Code of Practice on the Development, Operation, Inspection and. In exercise of the powers conferred by section 26 of the Telecommunications Order, 2001, the Authority for Info-communications Technology Industry of Brunei Darussalam (“Authority”) hereby issues the following Code of Practice on the Development, Operation, Inspection and. In MI O se on for licence, extension or exem OF DE ele ele ine tin tai electrical or supply instal ati n o est t i ctr cal or supply insta lat n o rk nit ty n relation to cable detection g o to 3 as s se ac on e . The Electrical Installation Requirements (EIR) is part of the initiative by the Department of Electrical Services (DES) to be the National Standards for all electrical installation in Brunei Darussalam pursuant to the authority of the Department of Electrical Services in accordance with the. This Act may be cited as the Electricity Act. In this Act, unless the context requires otherwise — “supply installation” means the whole of any plant or apparatus under one ownership or management, designed for the supply or use, or both the supply and use, as the case may be. This Act may be cited as the Electricity Act. Exemption of certain electri al wor y i ure nd evocation of electr cal li. owers of Authority in. erakas, Brunei Darussalam. Circulation is restricted to AITI emplo ees only for internal use. It must not be copied or used for any other purpose other than which it is supplied, without the expressed written autho mation to any third party.

Brunei Communication Base Station Battery Installation Regulations



LAWS OF BRUNEI

"supply installation" means the whole of any plant or apparatus under one ownership or management, designed for the supply or use, or both the supply and use, as the case may be, of electrical energy ...

[Get Price](#)

Electrical Installation Requirements

The Electrical Installation Requirements (EIR) is generally intended to be applied to electrical installation but in certain cases, they may need to be supplemented by other requirements and standards from ...



[Get Price](#)



Station Licence Guidelines

This licence authorizes the operation of a transceiving radio equipment of an on-board aircraft station which is used to communicate with other aircrafts, ground stations or L-Band satellites e.g. ...

[Get Price](#)

CODE OF PRACTICE ON THE DEVELOPMENT, OPERATION, ...

1.4.1 Every Licensees involving the development, operation, inspection and maintenance of the WCS, duly licensed in Brunei Darussalam or otherwise must comply with the applicable provisions of the ...

[Get Price](#)



Electrical Installation Requirements

Section II: Installation Requirements: Details the general installation requirements, electrical drawings, and short-time withstand current ratings.

[Get Price](#)

8th. JUNE, 2017 No. S 51 CONSTITUTION OF BRUNEI ...

(2) An electricity licensee may, at the request of the owner or occupier of any premises under or upon which any installation of the licensee is situated, relocate the installation if the licensee is satisfied ...

[Get Price](#)



14th. DECEMBER, No. S 86 TELECOMMUNICATIONS ORDER, ...

(4) The licensee shall observe the



provisions of the Radio Regulations and any other local or international rules and regulations applicable to radio communication equipment on board an aircraft.

[Get Price](#)

LAWS OF BRUNEI CHAPTER 223 ELECTRICITY

"supply installation" means the whole of any plant or apparatus in an installation owned or managed by a person for the provision of electricity (other than electricity used for the transmission of any ...

[Get Price](#)



Cap.71 (21.2.2011).fm

"supply installation" means the whole of any plant or apparatus under one ownership or management, designed for the supply or use, or both the supply and use, as the case may be, of electrical energy ...

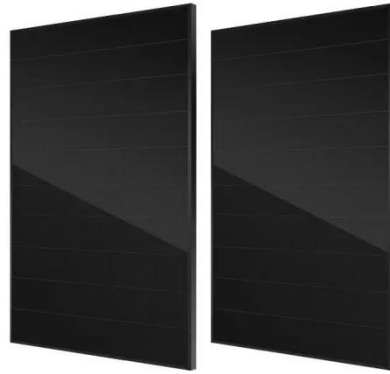
[Get Price](#)

Règlement d installation des batteries des stations de base de

Le nouveau règlement européen sur les

batteries, le règlement 2023/1542, introduit des changements et des exigences significatifs visant à améliorer la durabilité et la sécurité des batteries et des produits ...

[Get Price](#)



Contact Us

For catalog requests, pricing, or partnerships, please visit:
<https://www.pienaarshof.co.za>

