

PIENAAR ENERGY (PTY) LTD

Battery performance london



Battery performance london



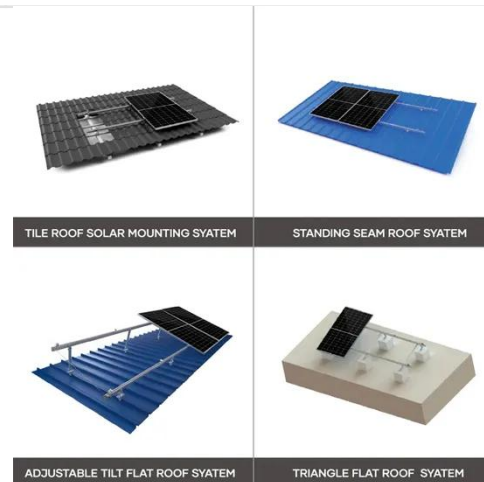
About:Energy Opens New Battery Testing Facility in Southwark, London

By offering access to essential data for advanced battery technologies, the facility aims to facilitate the integration of solid-state, sodium-ion, and LFMP batteries in various sectors.

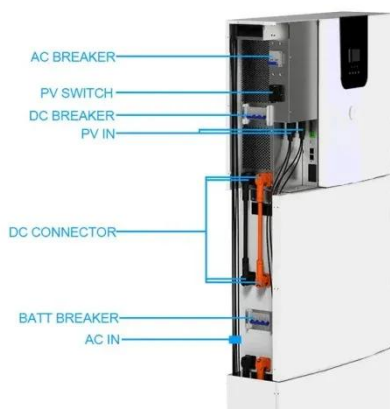
[Get Price](#)

London-based battery developer completes testing of 500 commercial

The growth comes as the battery industry faces increasing demand for faster development cycles and more accurate performance predictions across applications from electric vehicles to ...



[Get Price](#)



About Energy opens battery testing facility , Electronic Specifier

Spanning approximately 3,000ft², the facility features an advanced laboratory designed to carry out sophisticated battery performance testing and research.

[Get Price](#)

About:Energy opens London's most advanced battery testing facility

The facility is the most centrally located battery testing location in London and serves as a central hub for About:Energy's UK and European customers, whilst also helping to attract top talent ...

[Get Price](#)



About:Energy opens London's most advanced battery testing facility

The battery testing facility is headquarters for About Energy's experienced team, comprising experts with backgrounds from organisations such as Rolls Royce, Mercedes High ...

[Get Price](#)

Battery Performance , Energy Futures Lab , Imperial College London

This thesis focuses on developing methods for Li-ion battery testing and model parametrisation at cell level, which can be eventually used to investigate battery module and pack designs.

[Get Price](#)



Top 10 Lithium Battery Companies in London , Power Innovators



Explore London's leading lithium battery companies powering EVs, renewable energy, and smart storage with cutting-edge, eco-friendly technology solutions.

[Get Price](#)

About:Energy Opens Advanced Battery Testing Lab

State-of-the-art battery testing facility located in Southwark, London. Focus on next-generation batteries such as solid-state, sodium-ion, and LFMP. 3,000ft² lab designed to provide ...



[Get Price](#)

Contact Us

For catalog requests, pricing, or partnerships, please visit:
<https://www.pienaarshof.co.za>

