

## PIENAAR ENERGY (PTY) LTD

# Acceptance requirements after photovoltaic panel installation



## Overview

---

Owners and operators need to provide project design documentation (as build documentation), installation license, information about key components (solar panels and inverters), calibration lists of the installed meteorological sensors, technical manuals and maintenance manuals. Engineering, Procurement and Construction (EPC) contractor. This is the process of assuring safe operation of a solar photovoltaic (PV) system and making sure it is compliant with environmental and planning requirements, meets design and performance objectives, and that any tests meet contractual. Warranty Protection Requires Documentation: Most solar equipment manufacturers require documented commissioning procedures to validate warranty coverage, and without proper commissioning documentation, system owners face voided equipment warranties worth tens of thousands of dollars, insurance. Roof has 10 or more years useful life remaining (if roof-mounted). \*Please note, SERC funds may be used to address the impacted roof area directly under the array, but not to replace an entire roof. Measure and. For solar EPC contractors, developers, and commercial users, a detailed solar PV system commissioning checklist is essential before making the final payment. This step—overseen by the local Authority Having Jurisdiction (AHJ)—ensures that the installation aligns with the approved plan set and complies with all safety codes. Passing inspection means your.

## Acceptance requirements after photovoltaic panel installation

---



### How is photovoltaic panel acceptance conducted

Drawing on the Technology Acceptance model (TAM) and an extended Theory of Planned Behaviour (TPB), the study examined the determinants of intention to purchase rooftop photovoltaic (PV) panel

[Get Price](#)

### Final Acceptance Tests (FAT) of PV Power Plants , TÜV SÜD

The Final Acceptance Test provides certainty and confidence to your PV project by verifying the fulfillment of technical and safety standards. Without an FAT, there may be a loss of long-term

...

[Get Price](#)



### Photovoltaic panel acceptance instrument requirements

This standard address the safety aspects of a solar panel, encompassing both an assessment of the module's construction and the testing requirements to evaluate electrical,

[Get Price](#)



## Solar inspections 101: A guide to the solar inspection process

To make sure everything is done correctly, to code, and to the permitted plan set, an inspection is typically required before a system is approved to safely generate electricity and supply power to the ...

[Get Price](#)



## Solar PV Post-Evaluation Checklist

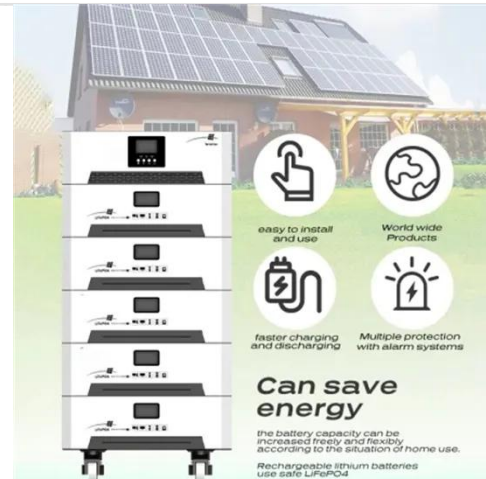
Roof has 10 or more years useful life remaining (if roof-mounted). \*Please note, SERC funds may be used to address the impacted roof area directly under the array, but not to replace an entire roof. ...

[Get Price](#)

## Quality is crucial for solar project acceptance processes

The process of solar PV acceptance ensures that photovoltaic systems are safe for operation, can remain compliant with environmental and planning requirements, meet design and ...

[Get Price](#)



## Solar Commissioning Guide: Complete PV System Testing

Comprehensive guide to solar commissioning procedures, testing

requirements, and performance verification for residential, commercial, and utility-scale PV systems.

[Get Price](#)



---

## Best practices for solar system commissioning and acceptance

Engineering, Procurement and Construction (EPC) contractor. This is the process of assuring safe operation of a solar photovoltaic (PV) system and making sure it is compliant with environmental and ...

[Get Price](#)



CE UN38.3 MSDS



## Solar PV System Commissioning Checklist: Ensuring Proper Installation

Ensure safety, efficiency, and compliance with a complete solar PV system commissioning checklist before final payment to maximize project performance.

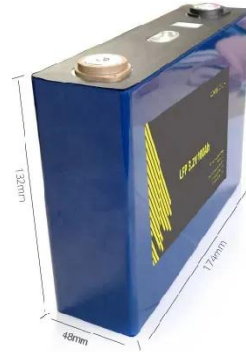
[Get Price](#)

---

## Solar Inspection Process: Best Practices, Pitfalls & Checklists

Success starts long before the first panel is mounted. A comprehensive plan set--covering site layout, structural attachments, and electrical diagrams--must be submitted and ...

[Get Price](#)



---

## Contact Us

For catalog requests, pricing, or partnerships, please visit:  
<https://www.pienaarshof.co.za>

