

PIENAAR ENERGY (PTY) LTD

9 battery connected to inverter



Overview

9 battery to an inverter requires understanding voltage compatibility, load requirements, and safety protocols. This quick guide shows you how to do it safely and efficiently. Whether you're setting up for backup power or going off-grid, here's how to get it right. How to wire an. Summary: Connecting a No. 9. Well, the obvious way to achieve this is to simply connect more batteries to your power inverter. Consequently, using a 9 volt battery can reduce inverter.

9 battery connected to inverter



How to Wire Inverter to Battery - No Sparks, Just Power

Wiring an inverter to a battery isn't rocket science--but get it wrong, and you could fry your gear or drain your power fast. This quick guide shows you how to do it safely and efficiently.

[Get Price](#)

Battery connection for inverter

This article enlightens the features, risks and connectivity of inverter and the battery along with specific safety measures, its hazards and troubleshooting strategies.



[Get Price](#)



Can a No. 9 Battery Be Connected to an Inverter? A Practical Guide

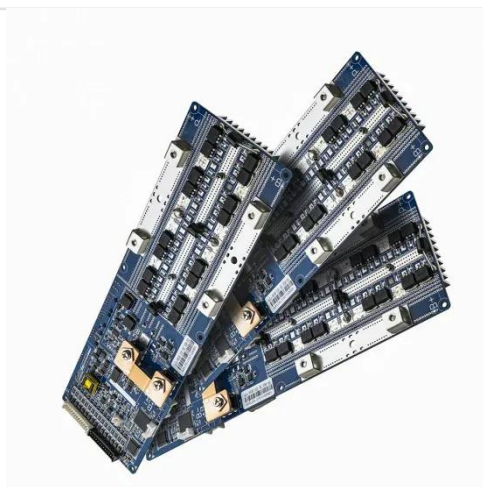
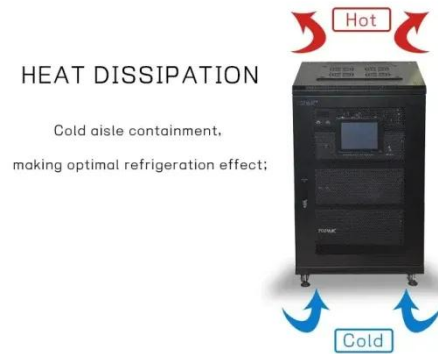
Summary: Connecting a No. 9 battery to an inverter requires understanding voltage compatibility, load requirements, and safety protocols. This guide explores technical specifications, real-world ...

[Get Price](#)

Inverter Connection with Battery - Step-by-Step Guide

In this video, we will walk you through the process of connecting an inverter to a battery for efficient power backup.

[Get Price](#)



Battery and Inverter Sizing Guide 2025: How to Match Solar Storage

Learn how to size and pair a battery with your solar inverter in 2025. Discover key ratios, examples, and Growatt solutions for optimal solar + storage system design.

[Get Price](#)

DETAILS AND PACKAGING



How to Connect a Large or Small Inverter to a Battery

The most common way to connect the inverter to the battery is used in vehicles that have frames that are electrically connected to the Negative terminal of the battery.

[Get Price](#)

Can A 12 Volt Inverter Use A 9 Volt Battery? Power Compatibility



A 12 volt inverter requires an input voltage between 11 and 14 volts, similar to a car battery. A 9 volt battery does not meet this requirement. This low voltage may prevent the inverter ...

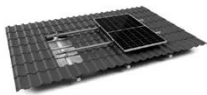
[Get Price](#)

How to Connect an Inverter to a Battery: Step-by-Step Guide for Solis

Properly connecting your inverter to a battery is essential for a reliable and efficient power backup system. By following the steps outlined in this guide, you can ensure a safe and seamless ...



[Get Price](#)



TILE ROOF SOLAR MOUNTING SYSTEM



STANDING SEAM ROOF SYSTEM



ADJUSTABLE TILT FLAT ROOF SYSTEM



TRIANGLE FLAT ROOF SYSTEM

Connecting Multiple Batteries to an Inverter: Easy Guide

Need more battery capacity on your inverter? Let's look at how to add more batteries and how many batteries you can connect to an inverter.

[Get Price](#)

Beginner question for battery to inverter connections

I have purchased a new Renogy 2000w pure sine wave inverter and a Renogy

60a mppt charge controller and want to switch these into my system this weekend. However my question is ...

[Get Price](#)



Contact Us

For catalog requests, pricing, or partnerships, please visit:
<https://www.pienaarshof.co.za>

