

PIENAAR ENERGY (PTY) LTD

275 How long and wide are photovoltaic panels

5 Years warranty



Overview

Photovoltaic plant cells always come in the same standard size: 156 mm by 156 mm, which is approximately 6 inches long and 6 inches wide. The solar panel's configuration can also contain 32, 36, 48, or 96 cells. That's basically a 66×39 solar panel. The dimensions of 72-cell solar panels are as follows: 77 inches long, and 39. Solar panel size is measured in watts (W) and indicates how much electricity the panel can produce under standard test conditions. 6 square feet), with a depth of less than two inches. Businesses and utility-scale facilities will often utilize 72-cell solar panels for greater energy-generating. As solar power becomes more mainstream in 2025, many homeowners and businesses are asking: “What are the dimensions of a solar panel?

” or “What solar panel size dimensions are right for me?

” Understanding solar panel dimensions is crucial for planning your solar system installation, maximizing.

275 How long and wide are photovoltaic panels



Understanding Solar Panel Dimensions In 2025: A Complete Size Guide

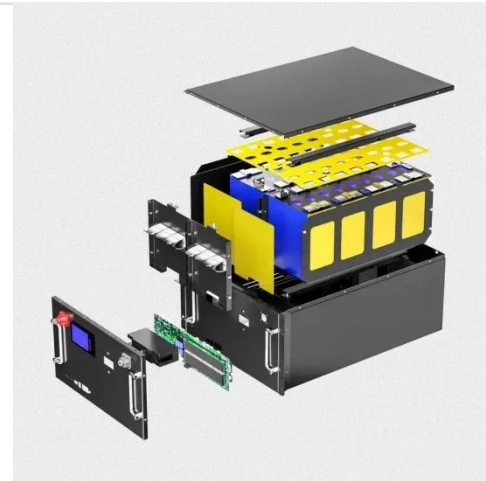
Explore the most common solar panel dimensions in 2025, including residential and commercial sizes. Learn how solar panel size dimensions affect power, installation, and efficiency.

[Get Price](#)

standard solar photovoltaic panel sizes explained

The standard residential solar photovoltaic panel size you'll see most often is based on a 60-cell configuration, typically measuring about 67 inches long by 40 inches wide. This size offers the ...

[Get Price](#)



Solar Panel Size & Dimensions Guide 2025 , Complete Specs

A standard residential solar panel measures 65-66 inches long by 39-40 inches wide by 1.5-2.0 inches thick, covering approximately 17.5-18.3 square feet. These 60-cell panels weigh 40-46 ...

[Get Price](#)

Average dimensions of photovoltaic panels

Generally speaking, the length of residential solar panels is between 65 inches (1.65 meters) and 79 inches (2 meters). Their width is between 39 and 41 inches (around 1 meter). The ...

[Get Price](#)



Standard Solar Panel Sizes And Wattages (100W-500W Dimensions)

Whenever you want to find out what the standard solar panel sizes and wattages are, you encounter a big problem: There is no standardized chart that will tell you, for example, "A typical 300-watt solar ...

[Get Price](#)

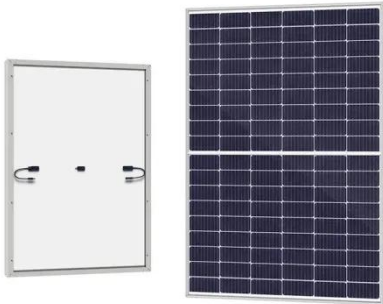
Solar Panel Size Chart - SizeChartly

Monocrystalline panels are known for their high efficiency and compact size, often measuring about 65 x 39 inches. These panels are ideal for limited spaces and maximize energy production. However, ...

[Get Price](#)



Solar Panel Size Guide (with 4 Charts)



If you install a 6 kilowatt solar panel, you'll require 20 cells. If they are average sized cells, the system will be 13 feet long and 27 feet wide, or 352 square ft.

[Get Price](#)

Solar panel size and weight: everything you need to know

Residential panels are usually made up of 60 PV solar cells, arranged in a 10 by 6 grid pattern. Although exact dimensions vary by manufacturer, home solar panels usually measure about ...

[Get Price](#)



Understanding Photovoltaic Panel Dimensions: A Practical Guide for

A 275W panel typically measures about 65" x 39", but here's the kicker: newer 275W panels can be 15% smaller than models from 2018 thanks to PERC cell technology.

[Get Price](#)

The Ultimate Guide to Solar Panel Dimensions and Sizes

For example, a typical home solar panel

may be around 1.7 meters long and 1 meter wide. The size of a solar panel directly connects to its wattage. Larger panels usually have more ...

[Get Price](#)



Solar Panel Size Guide (with 4 Charts)

The standard residential solar photovoltaic panel size you'll see most often is based on a 60-cell configuration, typically measuring about 67 inches long by 40 inches wide. This size offers the ...

[Get Price](#)

Contact Us

For catalog requests, pricing, or partnerships, please visit:
<https://www.pienaarshof.co.za>

